

**ELECTRICITY AUTHORITY
OF CAMBODIA**

**REPORT
ON
POWER SECTOR OF
THE KINGDOM OF CAMBODIA
FOR THE YEAR 2005**

**Compiled by EAC
August, 2006**

Preface

In accordance with the Electricity Law of the Kingdom of Cambodia, Electricity Authority of Cambodia (EAC) has the duty to prepare and publish the **Annual Report on Power Sector of the Kingdom of Cambodia**. The report is compiled from informations received from the licensees. This report is for dissemination to the Royal Government, institutions, investors and public desirous to know about the present situation of the power sector of the Kingdom of Cambodia.

EAC started its operation from 3rd September 2001. During the initial years of operation, EAC made strenuous efforts and concentrated on preparation of the basic framework required to fulfill its obligations and duties under the Electricity Law, for development of the power sector, ensuring continuity in power supply and compliance of the Law in providing electric power services by licensees and use of electricity by consumers. Till the end of the year 2005, the main electricity service providers numbering about 123, covering more than 95% of the electricity market in the Kingdom of Cambodia, were covered by the licenses issued by and under the regulation of EAC as per the provisions of the Electricity Law.

Keeping in view the importance of the Report on Power Sector, EAC prepared and published the first Report on Power Sector of the Kingdom of Cambodia in the year 2004 that covered the main data and relevant information related to the electric power services for the year 2003. EAC prepared and published the second report in 2005 covering the data for the year 2004. In the first half of the year 2006, EAC began to collect data and relevant information of the licensees for the year 2005 for the preparation of the third Annual Report on Power Sector in the Kingdom of Cambodia for the year 2005 as required by the Electricity Law. The data furnished by EDC, generation licensees, distribution licensees and some of the consolidate licensee is based on records maintained by them. But the data received from many consolidate licensees operating in rural areas is still not of the required level of quality and reliability as these licensees either do not have the means to measure the data or do not maintain the data properly. However, as the size of operations of these licensees is small (less than 2% of the total business of all licensees), it is hoped that it will not materially affect the overall quality of the data furnished in this report.

EAC plans to publish the Report on Power Sector of the Kingdom of Cambodia annually so that the data and relevant information on power sector is updated regularly to reflect the actual situation of the development of the sector.

EAC expects that this report will be a valuable document for the information on the power sector of the Kingdom of Cambodia.

Chairman
Electricity Authority of Cambodia

Table of Contents

		Page
Chapter 1	: Basic Law and Regulations in Power Sector Management in the Kingdom of Cambodia.....	5
1.1	: Electricity Law of the Kingdom of Cambodia.....	6
1.2	: Responsibility of Ministry of Industry, Mines and Energy and Electricity Authority of Cambodia in Power sector	7
1.3	: Duties of the Electricity Authority of Cambodia in the Power sector.....	8
1.3.1	: Regulation of the Electric Power Services.....	9
1.3.2	: To Govern the relation between the Delivery, Receiving and Use of Electricity.....	9
1.3.3	: Legal Documents for Governing and Regulating Electric Power Services and use of Electricity.....	10
Chapter 2	: Information on Electricity Authority of Cambodia – the Regulators for the Power Sector in the Kingdom of Cambodia.....	13
2.1	: Regulators in Power Sectors.....	14
2.2	: Organisation of Electricity Authority of Cambodia.....	14
2.3	: The Budget of EAC and License Fees.....	15
2.4	: Financial Statement of EAC.....	15
Chapter 3	: General Information.....	17
3.1	: Introduction.....	18
3.2	: Electric Power Sector in Cambodia.....	18
3.2.1	: Present Electric Power Situation.....	18
3.2.2	: Projects being implemented in the power sector.....	18
3.2.3	: IPPs.....	20
3.2.4	: Future Projects.....	20
3.2.5	: Rural Electrification Fund.....	21
3.3	: Specific Requirements of Electric Power Technical Standards (SREPTS).....	21
Chapter 4	: Information on Licenses and Licensees in Kingdom of Cambodia.....	22
4.1	: Licenses for Providing Electric Power Services.....	23
4.2	: Licenses issued and area of Supply.....	24
4.3	: General Situation of Electric Power Services by Licensees.....	26
4.3.1	: Situation of the Electric Power of the small Consolidated Licensees.....	26
4.4	: Planning of EAC to Improve the Operation of Electric Power Service.....	27
4.4.1	: Methodology of Advising, Guiding Training.....	27
4.4.2	: Methodology of Insective and penalties.....	28
4.4.3	: Methodology of Financial Monitoring and Competition.....	29
4.5	: Improvement in the Operation of Electric Power Services.....	29
4.5.1	: Improvemrnt of the Generating facilities by Small Service Providers.....	31
4.5.2	: Improvemrnt of the Distribution facilities by Small Service Providers.....	32
Chapter 5	: Cost of Electricity from Independent Power Producers and	

	Neighboring Countries and Electricity Tariff of Licensees...	35
5.1	: Cost of Electricity per kWh from Independent Power Producers...	36
5.2	: Cost of Electricity per kWh Imported from Neighboring Countries	37
5.3	: Electricity Tariff Purchased from Neighboring Licensees.....	38
5.4	: Electricity Tariff.....	38
	5.4.1 : Tariff of EDC for Phnom Penh and Kandal Province.....	38
	5.4.2 : Tariff of EDC for Provincial Towns, Cities and Big Town Centers.....	40
	5.4.3 : Tariff of EDC for place under ADB Loan Project.....	41
	5.4.4 : Tariff of EDC for Provincial Towns, Cities and Big Town Centers Revised dated October 26, 2005.....	42
	5.4.4 : Tariff of EDC of Licensees approved and revised by EAC.	44
	5.4.5 : Tariff of EDC at Electricity supply areas of other licensees.	45
Chapter 6	: Report on Generation, Import, Transmission and Supply of Electricity	46
6.1	: Electricity Generation and Installed Capacity.....	47
	6.1.1 : Generation by Licensee category.....	47
	6.1.2 : Generation by Type of Generation Facilities.....	47
	6.1.3 : Generation by Capacity of Generation Plant.....	48
	6.1.4 : Installed Capacity in all 24 cities/provinces.....	50
6.2	: Energy Imported from Neighboring Countries.....	50
6.3	: Electricity Transmission.....	51
	6.3.1 : High Voltage Transmission and Grid-Substation.....	51
	6.3.2 : Energy Transmitted.....	52
6.4	: Electricity Distribution.....	53
	6.4.1 : Electricity Distribution Facilities.....	53
	6.4.2 : Quantity of Electric Energy Sold and Number of Consumers	54

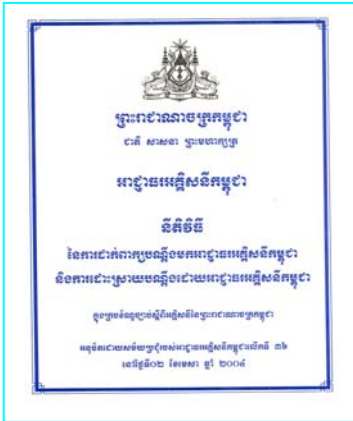
Annex

Annex 1	: Province wise Area of supply served by Distribution and Consolidated Licensees for the year 2005.....	55
Annex 2(a)	: Summary Information about Energy Sent out and Installed Capacity.....	64
Annex 2(b)	: Summary Information about the Generation Facilities and Energy Sent out classified by Generation Type.....	64
Annex 2(c)	: Summary Information about the Generation Facilities and Energy Sent out classified by Generation Size.....	65
Annex 3	: Information on Generation Licensees	66
Annex 4	: Summary Information on Distribution Licensees for the year 2005.	68
Annex 5	: Summary Information on Electricité du Cambodge having Consolidated License No. 001L for the year 2005.....	69
Annex 6	: Information on Consolidated Licensees for the year 2005.....	70
Annex 7	: Tariffs at other Electricity Supply Areas of the each Licensee at end of year 2005.....	78

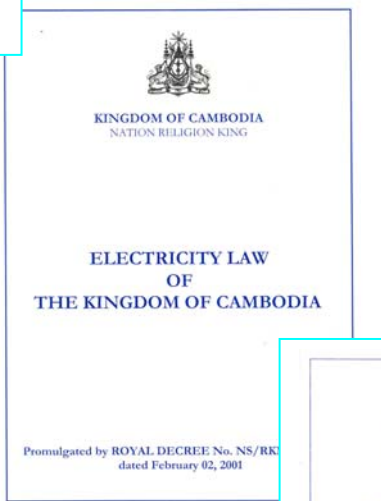
List of Table

Table 1	: Legal Documents for Governing and Regulating Electric Power Services and use of Electricity.....	10
Table 2	: Legal Documents Prepared and put into Force for Managing and Regulating Provision of Services and Use of Electricity.....	11
Table 3	: License Fees to be paid by Licensees.....	15
Table 4	: Types and Number of Licenses Issued up to 31 st December 2004	24
Table 5	: Number of different types of Licensees operating in each Province/City.....	25
Table 6	: Evaluation on General Situation of the Electric Power Service.....	26
Table 7	: Current term of Consolidate Licenses.....	28
Table 8	: Information on the Improvement of Generation facilities by Small Licensees.....	31
Table 9	: Information on Improvement of Distribution Facilities by Small Licensees.....	32
Table 10	: Cost of Electricity per kWh from Independent Power Producers.....	36
Table 11	: Cost of Electricity per kWh from Thailand.....	37
Table 12	: Tariff of EDC for Phnom Penh and Kandal Province.....	38
Table 13	: Tariff of EDC for Phnom Penh and Kandal Province effective from invoices issued from July 1, 2005.....	39
Table 14	: Tariff of EDC for Phnom Penh and Kandal Province effective from invoices issued from November 1, 2005.....	39
Table 15	: Tariff of EDC for Phnom Penh and Kandal Province for Commercial and Industrial Consumers.....	40
Table 16	Tariff of EDC at Provincial Towns, Cities and BigTown Centers.....	40
Table 17	Tariff of EDC at Provincial Towns, Cities and BigTown Centers effective after improvement under the ADB Credit is implemented.....	41
Table 18	Tariff of EDC at Provincial Town of Kampong Speu effective from invoices issued from November 1, 2005.....	42
Table 19	Tariff of EDC for Sihanoukville effective from invoices issued from November 1, 2005.....	42
Table 20	Tariff of EDC for provincial town of Siem Reap effective from invoices issued from November 1, 2005.....	43
Table 21	Tariff of EDC at Provincial Towns, Cities and BigTown Centers effective from invoices issued from November 1, 2005.....	43
Table 22	Electricity tariff of Licensees approved by EAC.....	44
Table 23	Electricity tariff of Licensees at Provincial town Pursat and Kampong Chhnang.....	45
Table 24	Information on total installed generation capacity of licensees in each city/provinces.....	50
Table 25	Contracted capacity and energy imported from neighboring countries...	51
Table 26	Information about High Voltage Transmission Lines.....	52
Table 27	Information about High Voltage Grid-Substation.....	52
Table 28	Energy Transmitted.....	53
Table 29	Information on Electricity Distribution Facilities.....	53
Table 30	Information on energy generated and purchased, energy sold, proportion losses and number of consumers classified by area of supply.....	54

Chapter 1



Basic Law and Regulations in Power Sector Management in the Kingdom of Cambodia



CHAPTER 1

Basic Law and Regulations in Power Sector Management in the Kingdom of Cambodia

1.1 Electricity Law of the Kingdom of Cambodia

Under the framework of reform in power sector, Royal Government of Cambodia has established the Electricity Law of the Kingdom of Cambodia in order to open for and attract private investors to participate in the development of the power sector in the Kingdom of Cambodia. The Electricity Law of the Kingdom of Cambodia was adopted by National Assembly on November 06, 2000 at the plenary session No.5 of term 2, agreed by the Senate on the form and content of the law on December 13, 2000 at the plenary session No.4 of term 1 and announced to be consistent with the Constitution by the Constitutional Council on January 15, 2001. The Law was finally promulgated by ROYAL DECREE No. NS/RKM/0201/03 dated February 02, 2001 by Preah Bath Samdech **Preah Norodom Sihanouk**, King of Cambodia.

The purpose of the Electricity Law of the Kingdom of Cambodia is to govern and to prepare a framework for the electric power supply and services throughout the Kingdom of Cambodia. This law covers all activities related to the supply, the provision of services and use of electricity and other associated activities of power sector. This law aims to establish the principles for operations in the electric power industry, the favorable condition for the investments in and the commercial operation of the electric power industry including the principles for the protection of the rights of consumers, the principles for the promotion of private ownership of the facilities for providing electric power services and the principles for establishment of competition wherever feasible within the electric power sector.

In preparation of a framework for the electric power supply and services throughout the Kingdom of Cambodia, the Law has established an institution called “Electricity Authority of Cambodia”, a legal public entity, being granted the right by the Royal Government to be an autonomous agency to carry out its duties as provided in the Electricity Law. For the management of electric power sector in the Kingdom of Cambodia, the Electricity Law provides that the Ministry of Industry, Mines and Energy shall be responsible for setting and administering the government policies, strategies and planning in the power sector. Whereas, the Electricity Authority of Cambodia shall ensure that the provision of services and the use of electricity shall be performed efficiently, qualitatively, sustain ably and in a transparent manner.

To enable Electricity Authority of Cambodia to ensure that the provision of services and the use of electricity is performed efficiently, qualitatively, and sustain ably, the Electricity Law assigns the powers and duties to it to issue Licenses to the Electric Power Service Providers, to Approve Tariff Rate and Charges, to issue Regulations, Procedures, Rules, Orders and Decisions as well as the right to resolve complaints and disputes related to the provision of services and the use of electricity. The Electricity Authority of Cambodia shall set clear principles for the provision of services and setting of tariff rate in the Kingdom of Cambodia as well as principles to cover other additional or miscellaneous services related to the above services through licensing. The Electricity Law promotes the private ownership of the facilities for providing electric power services in the Kingdom of Cambodia, leading to the establishment of competition wherever feasible within the electric power sector.

Electricity Authority of Cambodia

As per the provisions of the Electricity Law and powers and duties assigned to the Electricity Authority of Cambodia, Electricity Authority of Cambodia is the Regulator of the electric power sector, who is to regulate the provision of services and the use of electricity in the Kingdom of Cambodia.

The Electricity Law provides that the Electricity Authority of Cambodia shall consist of 3 Members, including the Chairman. The Chairman and Members shall be designated and proposed by the Prime Minister and shall be appointed by Royal KRET. Each Member shall have a 3 (three) years term, which shall be staggered, provided that the term of the initial members shall expire at different times. No member shall be appointed to serve in the Authority for more than 2 terms.

As per the Electricity Law of the Kingdom of Cambodia, “no person may operate as an electric power utility or provide electric power services unless he/she has performed under and in accordance with the terms of a valid license issued by the Authority. Any person, who is operating as an electric power utility at the time of promulgation of the Electricity Law, shall apply to the Electricity Authority of Cambodia for a license within 6 month of receiving the initial notice from the Authority”.

Regulations, orders and decisions issued by the Electricity Authority of Cambodia are enforceable as per the Electricity Law. Electricity Authority of Cambodia is competent to file complaints in the courts of the Kingdom of Cambodia for any violation of the Law or any violation of the regulations, orders, decisions as well as licenses issued by EAC.

The Law also provides for the rights, obligations and penalty on the service providers as well as the consumers in order to establish fair condition in the business and the use of electricity.

At last, the Electricity Law provides that the Ministry of Industry, Mines and Energy shall transfer in an orderly manner the functions and duties defined in this law to EAC as soon as the EAC is fully operational. The two main functions in power sector in the Kingdom of Cambodia were: 1 - the works of setting and administrating the government policies, strategies, and planning, and 2 - the works of regulating, liaison, and arbitration between the provision of services and the use of electricity. The law provides that these two functions shall be separated from each other as is the case in other developed countries. The Ministry of Industry, Mines and Energy shall be responsible for setting government policies, strategies and electric power planning. And Regulation and the liaison of the provision services and the use of electricity shall be transferred to EAC.

The enactment of the Electricity Law of the Kingdom of Cambodia is a big leap forward in bringing reforms in the electricity sector. This reform will encourage the private investors to invest in the power sector in a fair, just and efficient manner for the benefit of our society.

1.2 Responsibilities of Ministry of Industry, Mines and Energy and Electricity Authority of Cambodia in Power sector

Article 3 of the Electricity Law of the Kingdom of Cambodia defines the responsibility of Ministry of Industry, Mines and Energy and Electricity Authority of Cambodia separately. As per the provisions of this article, after EAC has started its operation, the governing of the power sector in the Kingdom of Cambodia shall be bifurcated, 1-the Ministry of Industry,

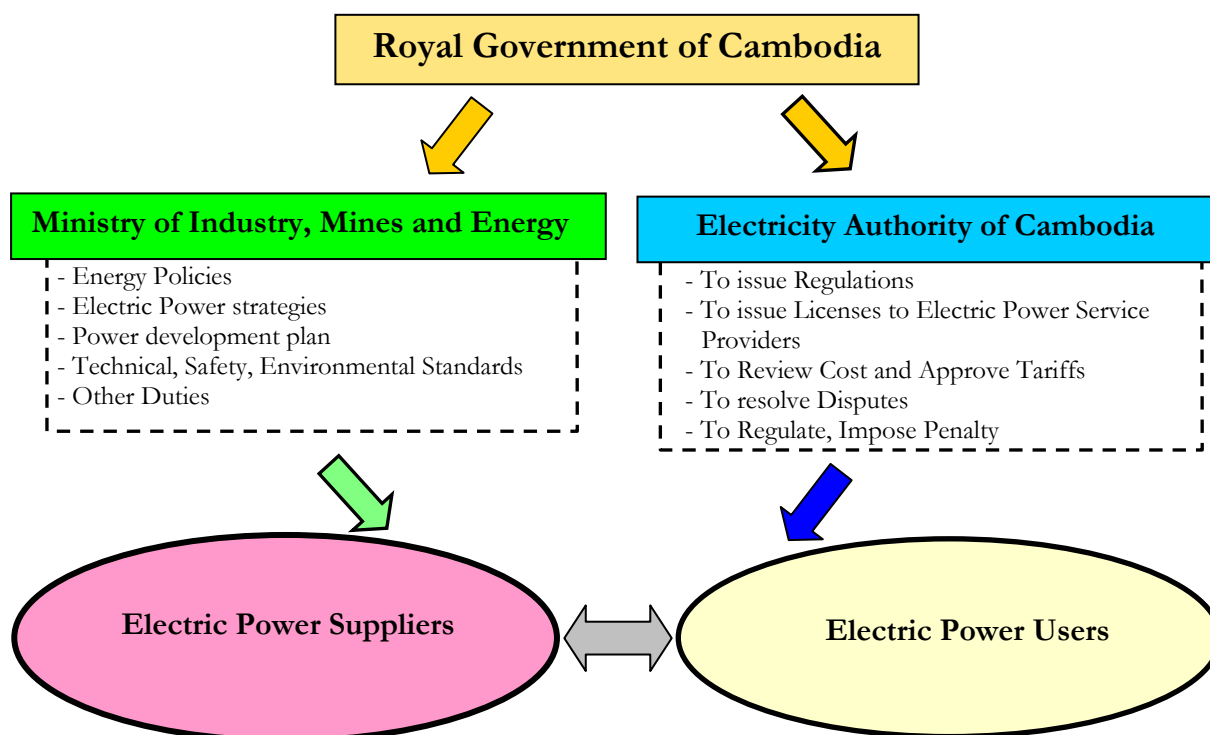
Electricity Authority of Cambodia

Mines and Energy shall be responsible for setting and administrating the government policies, strategies and planning in the power sector and 2-the Electricity Authority of Cambodia shall ensure that the provision of services and the use of electricity shall be performed efficiently, qualitatively, sustain ably and in a transparent manner.

It means that, the Ministry of Industry, Mines and Energy, through its duty for setting and administering the government policies, strategies and planning in the power sector, is the institution of the Royal Government to chalk out the path that power sector of the Kingdom of Cambodia is going to take. This institution is also responsible for setting the technical standards for the power sector.

While EAC is responsible to issue rules, regulations and procedures and also is responsible to monitor, guide, coordinate including requiring the operators in power sectors both suppliers and consumers to follow the policy and guidelines and technical standards issued by Ministry of Industry, Mines and Energy and ensure that the provision of services and the use of electricity shall be performed efficiently, qualitatively, sustain ably and in a transparent manner.

The roles of the two organization in governing power sector in the Kingdom of Cambodia as provided in the Electricity Law of the Kingdom of Cambodia is shown in the following:



1.3 Duties of the Electricity Authority of Cambodia in the Power sector

Article 6 of the Electricity Law of the Kingdom of Cambodia provides that “The Electricity Authority of Cambodia is a legal public entity, being granted the right by the Royal Government to be an autonomous agency to regulate the electric power services and to govern the relation between the delivery, receiving and use of electricity”. It means that EAC is a public institution in power sector. The Government granted EAC the right and autonomy

Electricity Authority of Cambodia

to regulate the electric power services and to govern the relation between the delivery, receiving and use of electricity.

As can be seen from the provisions of the Law stated above, the Royal Government has granted the right and autonomy to EAC on two points, firstly - to regulate the electric power services and secondly - to govern the relation between the delivery, receiving and use of electricity.

1.3.1 Regulation of the Electric Power Services

Providing Electric Power Services mean the business of providing electric power services. Electricity Law of the Kingdom of Cambodia has granted the right and autonomy to EAC to regulate the activities of these services in order to ensure that the services and the business of the electric power service providers are actually carried out efficiently, qualitatively, sustainably and in a transparent manner. Granting the right and autonomy to EAC to regulate these services does not mean that Law has provided for EAC to get involved in or to manage the internal business of the electric power service providers. But it allows EAC to advise, guide or direct the service provider to modify or cease such activity which affects the service being performed efficiently, qualitatively, sustainable and in a transparent manner. The guiding action or direction to revise or cease any activity is to be carried out in public interest and to protect the interest of the consumers.

1.3.2 Governance of the relation between the Delivery, Receiving and Use of Electricity

The relation between the Delivery, Receiving and Use of Electricity means the relation between generators and transmitters, between generators and distributors, between transmitters and distributors or between suppliers and consumers. These relations relate only to the cycle of delivery, receiving and use of electricity. The relations can cover the conditions of delivery and receiving electric power services between above parties; the obligations and rights of the above parties in delivery and receiving electric power services; the cost of electric power services that one party pays to the other party; the quality of electric power services that one party provides to other parties etc.

Electric Power Services mean services in electricity sector provided by one party to other parties. Electric power services does not only mean provision of **“Electricity”** by suppliers to the consumers or the generation, transmission or distribution services provided by one service provider to other service providers but can be any electricity work such as the installation of electrical equipments and network, operation and maintenance, the services in relation to providing the electric power services, the implementation of any work of electric power services etc., which one electric service provider delivers to other electric service providers or to consumers.

The Electricity Law of the Kingdom of Cambodia has granted the right and autonomy to EAC to govern these relations between the Delivery, Receiving and Use of Electricity.

According to the Article 7 of Electricity Law of the Kingdom of Cambodia, EAC has the following powers and duties:

- (a) To issue, revise, suspend, revoke or deny the licenses for the provision of electric power services as provided in article 29 of the Law;

- (b) To approve tariff rates and charges and terms and conditions of electric power services of licensees, except where the Authority consider those rates or charges and terms and conditions are established pursuant to a competitive, market-based process;
- (c) To enforce regulations, procedures and standards for investment programs by licensees;
- (d) To review the financial activities and corporate organization structure of licensees to the extent that these activities and organization directly affect the operation of the power sector and the efficiency of electricity supply;
- (e) To approve and enforce the performance standards for licensees;
- (f) To evaluate and resolve consumer complaints and contract disputes involving licensees, to the extent that the complaints and disputes relate to the violation of the conditions of license;
- (g) To approve and enforce a uniform system of accounts for all licensees;
- (h) To prepare and publish reports of power sector and relevant information received from licensees for the benefit of the Government and the public;
- (i) To prescribe fees applicable to licensees;
- (j) To determine the procedures for informing the public about its activities within its duties, in order to ensure that the Electricity Authority of Cambodia complies with the principle of transparency as set forth in Article 3 of this law;
- (k) To issue rules and regulations and to make appropriate orders, and to issue temporary and permanent injunction for electric power services;
- (l) To impose monetary penalty, disconnect power supply, suspend or revoke the license for the violations of this Law, standards and regulations of the Electricity Authority of Cambodia;
- (m) To require the electric power service providers and the consumers to obey the rules relating to the national energy security, economic, environmental and other Government policies;
- (n) To perform any other function incidental or consequential to any of the duties as describes above; and
- (o) To establish the terms and conditions of employment of the officers or employees including experts/advisors of Electricity Authority of Cambodia.

1.3.3 Legal Documents for Governing and Regulating Electric Power Services and use of Electricity

The Legal Documents for governing and regulating electric power services and use of electricity in the Kingdom of Cambodia are classified in Table 1 below:

Table 1: Legal Documents for Governing and Regulating Electric Power Services and use of Electricity

1 Law	The Electricity Law of the Kingdom of Cambodia and other Laws to manage and regulate the power sectors. Laws are main documents in regulating all activities in power sector and also the main base for preparation of other legal documents needed for managing and regulating the power sector.
2 Legal Documents of Government Class	Sub-Decree, Decision, Notification etc. of the Royal Government. These documents are for determining the power sector policy and for regulating the activities in power sector and are issued by the Royal Government under the provisions of the

	Electricity Law. The main principles of the power sector, which are not defined in the Law, can also be issued for application as a standard document of the Royal Government.
3 Legal Documents of Ministry Class	<p>Declaration (Prakas) and Decisions of the Ministry of Industry, Mines and Energy. These are the documents for managing the works, which are under the duties of Ministry of Industry, Mines and Energy such as policy, development, planning, strategy, technical standards and other determinations in power sector such as:</p> <ul style="list-style-type: none"> - Investments in the rehabilitation and development of power sector in the short, medium and long term; - Restructuring, private sector participation and privatization of Public Utilities; - Promotion of the use of indigenous energy resources in the generation of electricity; - Planning and agreements on the export and import of electricity; - Subsidies to specific classes of customers and priorities regarding consumers of electricity; - Promotion of efficiency in generation, transmission, distribution and consumption of electricity and action taken to create a Comprehensive Electricity Conservation Program for Cambodia; and - Electricity sector emergency and energy security strategies.
4 Legal Documents of EAC	Licenses, regulations, procedures and decisions of Electricity Authority of Cambodia (EAC), which are issued by EAC under the framework of the Electricity Law. These documents are for managing and regulating the electric power services and the use of electricity in the Kingdom of Cambodia.

The legal documents prepared and put into force for managing and regulating provision of services and use of electricity in the Kingdom of Cambodia up to the end of the year 2005 are shown in the table 2 below:

Table 2: Legal Documents Prepared and put into Force for Managing and Regulating Provision of Services and Use of Electricity


No.	Name of Standard Documents	Promulgated by	Date Promulgated
1	Electricity Law of the Kingdom of Cambodia	The King	February 2, 2001
2	Sub-Decree on the Rate of the Maximum License Fees applicable to Electric Power Service Providers in the Kingdom of Cambodia	Royal Government	December 27, 2001
3	Procedures for Issuing, Revising, Suspending, Revoking, or Denying Licenses	Electricity Authority of Cambodia	September 14, 2001
	Revision 1		December 12, 2002
	Revision 2		March 16, 2004
4	Regulations on General Conditions of supply of Electricity in the Kingdom of Cambodia	Electricity Authority of Cambodia	January 17, 2003
	Revision 1		December 17, 2004

Electricity Authority of Cambodia

5	Regulatory Treatment of Extension of Transmission and Distribution Grid in the Kingdom of Cambodia	Electricity Authority of Cambodia	October 28, 2003
6	Regulations on Overall Performance Standards for Electricity Suppliers in the Kingdom of Cambodia	Electricity Authority of Cambodia	April 2, 2004
7	Procedure for Filing Complaint to EAC and for Resolution of Complaint by EAC	Electricity Authority of Cambodia	April 2, 2004
8	General Requirements of Electric Power Technical Standards of the Kingdom of Cambodia	Ministry of Industry, Mines and Energy	August 16, 2004
9	Sub-Decree on Creation of Rural Electricity Fund of the Kingdom of Cambodia	Royal Government	December 4, 2004
10	Sub-Decree on Principles for Determining the Reasonable Cost in Electricity Business	Royal Government	April 8, 2005

The contents of the legal documents stated in table 2 above, are available at EAC website www.eac.gov.kh.

Chapter 2



**Information on
Electricity Authority of Cambodia –
the Regulator for the Power Sector
in the Kingdom of Cambodia**

CHAPTER 2
Information on Electricity Authority of Cambodia – the Regulator for the Power Sector in the Kingdom of Cambodia

2.1 Regulator in Power Sector

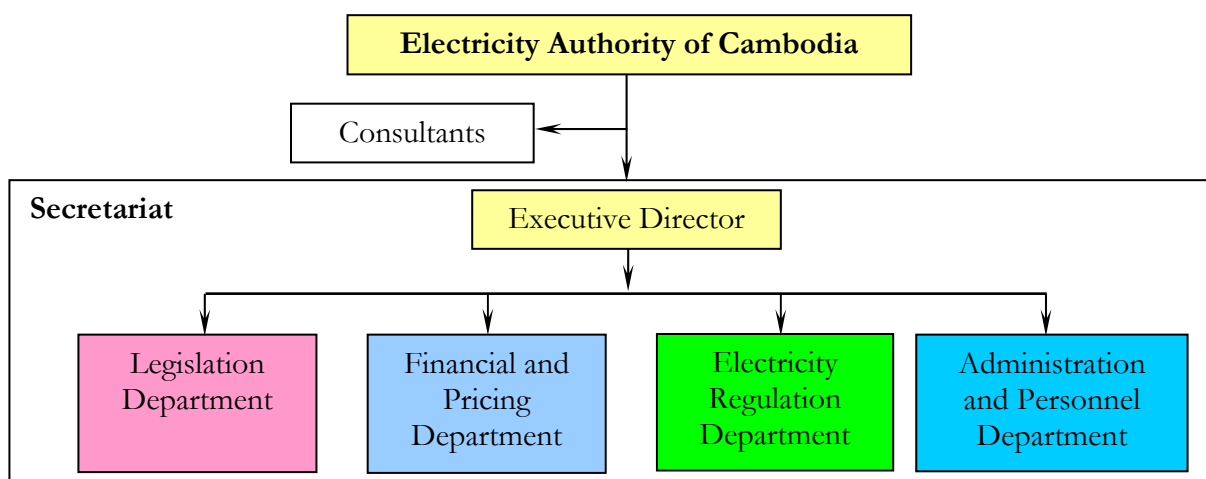
According to the Electricity Law, the Electricity Authority of Cambodia shall consist of 3 (three) members. The members of EAC shall be designated and proposed by the Prime Minister and shall be appointed by the Royal KRET. In the year 2005, the regulators for the power sector, appointed by the Royal KRET, are as follows:

1. **H.E. Dr. Ty Norin**, Chairman
2. **H.E. Yao Bunmeng**, First Vice-Chairman
3. **H.E. Sam Oeun Kim Hoeun**, Second Vice-Chairman

2.2 Organisation of Electricity Authority of Cambodia

As provided by Electricity Law, EAC shall consist of three members and shall have one secretariat for assistance. This secretariat shall be headed by one Executive Director. The Executive Director shall be appointed by Chairman of EAC after consulting with other members. The secretariat of EAC shall have specialized functional departments, which do works in their specialised fields for EAC.

At present, EAC has its organization structure as per the schematic diagram below. The highest authorities of EAC are the three regulators i.e. the chairman of EAC and the two vice-chairmen. Under the chairman and vice-chairmen, there is one secretariat headed by the executive director. Secretariat provides support to EAC for administrative and technical works and controlling the specialised departments under it. This secretariat consists of four departments for performing the works in their specialised fields separately and they are 1 – Department of Administration and Personnel, which is in charge of administration and personnel works; 2 – Department of Electricity Regulation, which is in charge of electricity technical works; 3 – Department of Financial and Pricing, which is in charge of financing, accounting and analyzing the electricity tariff works; and 4 – Department of Legislation, which is in charge of Legal works and resolution of dispute and imposition of fines.



2.3 The Budget of EAC and License Fees

The Electricity Authority of Cambodia is an autonomous agency working for the interest of all electric power service providers and electricity users in the Kingdom of Cambodia. Therefore the expenditure of EAC for its operation is to be borne by all electric power service providers in the form of payment of license fees. Article 27 of the Electricity Law provides that EAC shall have an autonomous budget for their operation. This budget shall come through fees paid by applicants and licensees as determined by EAC. This fee is called the license fee. For governing the license fees charged by EAC, The Electricity Law has further provisions that “The maximum license fees are to be determined by a Sub-Decree of the Royal Government”. It means that the license fees charged by EAC shall be within the maximum rates decided by the sub-decree of the Royal Government.

Under the provisions of the Electricity Law of the Kingdom of Cambodia, the Royal Government have issued sub-decree No. 131-OR-N-KR/BK dated December 27, 2001 determining the maximum license fees applicable to the electric power service providers in the Kingdom of Cambodia.

According to Electricity Law, EAC shall determine the rate of the license fees to be paid by the licensees every year based on the maximum license fees determined by the sub-decree. For the year 2005, EAC has determined the license fees to be paid by licensees vide Notification No. 013SR-05-EAC dated February 9, 2005. The license fees determined for the year 2004 and 2005 are given in Table 3 below.

Table 3: License Fees to be paid by Licensees

Type	Riel per kWh	
	Year 2004	Year 2005
Generated or Power Purchased from any other Country	1.60	1.50
Transmission	0.60	0.50
Distribution and Sale	1.10	0.90
Retail	0.50	0.50
Other services license fee	0.1%	0.1%

2.4 Financial Statements of EAC

The Electricity Law provides that the annual financial statement, together with the accounting books of the Authority and related records shall be audited by auditor and inspected by the National Audit Authority. Within 1 (one) month after auditing, the Authority shall submit all reports to the Prime Minister for approval, and shall publish the approved reports to the public. The audited income statement of Electricity Authority of Cambodia for the year 2002, 2003 and 2004 is given below.

Income statement Reports for the years 2002, 2003 and 2004

(After Audit)

All figures in Riels

	<u>2002</u>	<u>2003</u>	<u>2004</u>
<u>Revenues</u>			
License Fees	1,228,319,840	1,551,152,850	1,908,040,000
Application Fees	5,200,000	4,050,000	3,300,000
Finished License Fees		-	1,365,600
Transfer fund from Project	467,964	47,833,948	-
	-----	-----	-----
Total Revenues	1,233,987,804	1,603,036,798	1,912,705,600
<u>Expenses</u>			
Fixed Assets	451,963,530	605,535,449	328,516,114
Salary	366,601,600	599,068,520	708,104,110
General Administration	167,670,204	437,366,897	673,536,320
	-----	-----	-----
Total Expenses	986,235,334	1,641,970,866	1,710,156,544
Opening Balance	(-) 37,743,300	162,429,157	123,495,089
Income	1,233,987,804	1,603,036,798	1,912,705,600
Expenditure	986,235,334	1,641,970,866	1,710,156,544
Fund transferred to project	47,580,013		
Surplus/Deficit (Income-Exp)	200,172,457	(-) 38,934,068	202,549,056
Closing Balance	162,429,157	123,495,089	326,044,145

Chapter 3

General Information

CHAPTER 3 General Information

3.1 Introduction

The Kingdom of Cambodia, a member country of the Association of South East Asian Nations (ASEAN), with an area of 181,035 square Kilometers, is situated in the Lower Mekong region. Its neighboring countries are Thailand in the West, Vietnam in the East and Laos in the North. Cambodia has a population of approximately 13.5 million, of which 84% live in rural areas. Most of the existing energy sources in the country are used by the people living in rural areas. They use wood and char coal, which is the only source of energy for cooking. The exact amount of coal, petroleum and gas available in Cambodia is not known, as no specific studies were conducted in the past. In 2005, exploitable oil and natural gas deposits were found beneath Cambodia's territorial waters. When the commercial extraction will begin is still uncertain. Potential of hydropower in Cambodia is high (more than 10,000 Megawatts) but the development of these energy sources has not been implemented mostly due to lack of pre-feasibility study of the projects and investment capital. The Government of Cambodia has initiated actions to develop the 193 MW Kamchay Hydro Power project and to make feasibility study of few other hydro projects. At the moment, import of electricity from neighboring countries at low tariff rates is an appropriate choice to bridge the gap between demand and supply and to reduce the electricity tariff. This will increase the size of electricity market leading to large-scale power development in Cambodia. The Government of Cambodia and EDC have taken actions to construct HV lines to Vietnam and Thailand to import electricity in near future.

3.2 Electric Power Sector in Cambodia

3.2.1 Present Electric Power Situation

Electric power supply facilities in Cambodia were seriously damaged during war, especially during the Pol Pot genocidal regime from 1975 till the end of 1979. After the liberation of the country on January 7, 1979, the Royal Government of Cambodia has started to restore electricity infrastructure with the support from the international community such as World Bank (WB), Asian Development Bank (ADB), and Japan etc. The electric power supply systems in Cambodia till now are isolated systems, not interconnected with each other, and more than 90% of electric power generation is from diesel power plant. Per capita consumption is about 48 kWh per year and about 17% of total households in Cambodia have access to electricity. The largest electric power system is the Phnom Penh System with a peak demand of 133 MW in 2005, which supplies to the capital of the Kingdom of Cambodia.

Due to small diesel fueled isolated generation system completely dependent on high-cost fuel imported from foreign countries, and not having interconnected system and with high power losses in the distribution network, the electricity prices in Cambodia are highest in the region.

3.2.2 Projects being implemented in the power sector

A number of projects are being implemented to improve the power situation, establish a national grid and provide electricity to more consumers and more areas. Some of the major projects under implementation are described below:

Provincial Power supply under ADB loan: The Project provides to restore and expand the electrical networks in important provincial towns. The physical component includes (i) rehabilitation and extension of the distribution systems in Banlung, Kampong Speu, Kampot, Prey Veng, Banteay Mean Chey & Mongkul Borei, Stung Treng, Svey Rieng, and Takeo & Angtassom; (ii) installation of new supplies consisting of small diesel generating sets at Kampot, Prey Veng, Banteay Mean Chey, Stung Treng, and Takeo. The project is implemented by EDC.

Greater Mekong Subregion Transmission Project under ADB loan: The main components of the project are: (i) construction of a double circuit 220 kv transmission line approximately 110 km. long from the Vietnamese borders to Phnom Penh, associated substations in Phnom Penh and Takeo; (ii) construction of a power supply system to affected households along the transmission line route. The project is implemented by EDC.

Rural Electrification and Transmission Project under World Bank credit/assistance: The main components of the project are: (i) strengthening of 115 kV system in Phnom Penh; (ii) extending the MV grid network and the LV network to provide power supply to about 50,000 customers in the four provincial areas of Sihanoukville, Battambang, Kampot and Kampong Speu; (iii) establishment of a Rural Electrification Fund to assist REEs and electrification by renewable energy. Component (i) and (ii) are being executed by EDC and component (iii) is being executed by MIME.

Transmission Project from Thailand Border to Siem Reap and Battambang: EDC has signed a transmission agreement with A.S.K. Co., Ltd for construction of 115 kV transmission line from Thailand Border to Banteay Mean Chey, Siem Reap and Battambang with substations at Banteay Mean Chey, Siem Reap and Battambang.

Transmission Project from Takeo to Kampot: The project consists of 220 kV transmission line from Takeo to Kampot and substation at Kampot. The project is being executed by EDC with the assistance provided by KfW to Government of Cambodia.

The implementation of the above projects will establish the southern grid and the western grid making it possible to import electricity from Vietnam and Thailand.

Power Purchase Agreement (PPA) has been signed by EDC to import power from Vietnam and it is expected that the construction on the Vietnam – Phnom Penh transmission project will be started in the year 2006 and import of electricity from Vietnam to Phnom Penh will be possible by end of year 2007. The import of Electricity from Vietnam is expected to be 80MW for the first two years and increased up to 200MW from the third year. The construction of Takeo-Kampot transmission lines will be started soon and expected to be completed by end of year 2008.

For the western grid, PPA for import of power from Thailand has also been signed. If ASK Co., Ltd can complete the construction of the network in accordance with the term stipulated in the Agreement, electricity can be imported from Thailand by 2007, for supplying to the provinces of Banteay Meanchey, Battambang and Siem Reap. Further there is a planning to extend the distribution network from provincial town of Battambang to supply to the surrounding region within 40 Km from the provincial town under the loan from World Bank.

3.2.3 Independent Power Producers (IPPs)

During 2005, EAC has issued no objection to the PPAs between EDC and the following IPPs, the details of which are given below:

1. City Power Group Corporation Co., Ltd – The generating plant is to supply power to the Phnom Penh System. The contracted capacity was initially 5 MW, which was later enhanced to 7.5 MW. The Plant has started power supply in 2005.
2. Colben System PTE Ltd – The contracted capacity of the plant for supply to EDC system at Sihanoukville is 5 MW and for supply to Phnom Penh is 15 MW. Supply to Phnom Penh has started in first half of 2006.
3. (Cambodia) Electricity Private Co., Ltd - The contracted capacity of the plant for supply to EDC system at Phnom Penh is 45 MW. Supply has started in first half of 2006.

3.2.4 Future Projects

The Ministry of Industry, Mines and Energy (MIME) has taken actions to develop a number of projects with the assistance of international funding and private participation to develop the power system in Cambodia. The projects are at different stages of development such as feasibility study, loan/assistance negotiation, or preimplementation. Some of the important projects under consideration are stated below.

Kamchey Hydro Power Plant – The PPA has been signed between EDC and Sinohydro Corporation Limited in 2006 to develop the Kamchay Hydro Project with a total installed capacity of 193 MW. On completion of the project, electricity will be delivered to the southern grid at Kampot substation.

Other Hydro Power Plants – Even though the hydropower potential of Cambodia is estimated at 10,000 MW and desk study has been done for a number of projects, feasibility study has been done for a few projects. To attract private funding for the projects, the Government has allowed private sector to carry out feasibility study of certain projects including Stung Atay (120 MW), Lower Russey Chrum (204 MW), Upper Russey Chrum (32 MW), Srey Pok II (200 MW), Se San II (207 MW) and exploring possibility of taking up these projects with either private sector participation or funding from international funding agencies.

Kampot – Sihanoukville Transmission Project - The Ministry of Industry, Mines and Energy (MIME) has taken up with ADB and Japanese Bank International Cooperation (JBIC) of Japan to get loan for the construction of 220 kV Kampot-Sihanoukville transmission line with substations at Vealreinh and Sihanoukville.

Vietnam-Kampong Cham Transmission Project and Laos–Steung Treng Transmission Project – The feasibility study for both these projects is being undertaken by World Bank.

MIME withlines. So it is expected that in the next few years, the southern region will have a big interconnected transmission system. This will open the opportunity of investment on the construction of large-scale power plants, such as hydropower plant, gas turbine power plant or coal power plant, with low price in our own region.

3.2.5 Rural Electrification Fund

The Royal Government of Cambodia has issued a Royal Decree to establish a public institution the “Rural Electrification Fund”, with administrative, managerial, technical and financial autonomy under the Laws of the Kingdom of Cambodia, for helping in the development of Rural Electrification in the Kingdom of Cambodia. The objectives for which REF is established are:

1. To promote the equitable rural electrification coverage by facilitating the population’s access to electricity at affordable price for economic, social and household uses, thus contributing to poverty reduction, and
2. To promote and encourage the private sector to participate in providing the sustainable rural electrification services, in particular for the exploitation of the economic application of technically and commercially well proven, new and renewable energy technologies.

The funding for REF shall be through donations and grants whose sources and terms shall be acceptable to the Ministry of Industry, Mines and Energy and to the Ministry of Economy and Finance and other sources from the government. The Funding will have to be regular and sufficient, in order to fulfil the government rural electrification policy and target.

3.3 Specific Requirements of Electric Power Technical Standards (SREPTS)

General Requirements of Electric Power Technical Standards (GREPTS) was issued by MIME on July 14, 2004. GREPTS was prepared in cooperation with JICA. Grepts covered the general provisions on technical standards for thermal generation facility, hydro power generating facility, transmission and distribution facility and house wiring.

Now, a JICA (Japan International Cooperation Agency) project is preparing the Specific Requirements of Electric Power Technical Standards (SREPTS). The SREPTS will cover the specific provisions in details for the areas covered in GREPTS. Considering the immediate need, in the first phase the SREPTS will cover areas of themal (diesel) generation, transmission and distribution.

After the drafting is over, the provisions of SREPTS will be dissiminated in a seminar among the stakeholders and their opinion received. Thereafter the SREPTS will be finalized and issued by MIME in near future.

Chapter 4

Information on Licenses and Licensees in the Kingdom of Cambodia

CHAPTER 4 Information on Licenses and Licensees in the Kingdom of Cambodia

4.1 Licenses for Providing Electric Power Services

As per the provisions of the Electricity Law, each electricity service provider is required to have a license issued by EAC and to abide by the provisions of the Electricity Law and those of its license, and regulations and procedures of EAC. License for providing electric power services is an authorized document confirming to the provisions of the Electricity Law, which EAC decides to grant to any individual or legal entity to give it the right for providing electric services as per the provisions defined in the license (called the Conditions of License). As explained above, each license has two main parts:

- a. Decision to grant the right to provide the electric power service and
- b. Conditions of license.

Types of licenses to be issued and regulated by EAC are stated below:

1. **The Generation License** grants the right to generate electricity power from specifically fixed identified generation facilities.
2. **The Transmission License** grants the right to provide the transmission service. There are 2 types of Transmission License: National Transmission License and Special Purpose Transmission License.
 - **The National Transmission License** can be issued only to state power transmission company, under the Government control, to have the right to provide the transmission service for delivering the electric power to the distribution companies and bulk power consumers throughout the Kingdom of Cambodia
 - **The Special Purpose Transmission License** grants the right to construct, to own and to operate the specifically fixed identified transmission facilities in the Kingdom of Cambodia that have the specified purpose.
3. **The Distribution License** grants the right to provide the electricity distribution services in a determined contiguous territory.
4. **The Consolidated License** is a license, which may be the combination of some or all types of licenses. The Consolidated License can be issued to EDC and to the isolated systems to grant the right to generate, transmit, dispatch, distribute and sale the electric power to the consumers. Consolidate License can also be issued on consideration of long term planning and the objectives of Government policy to reduce long run marginal cost for supply of electricity to consumers, establish a national grid and progressively expand this grid throughout Kingdom of Cambodia.
5. **The Dispatch License** grants the right to control, to manage and operate the dispatch facilities for facilitating the delivery and receiving the electricity from the generation, transmission and distribution systems.

6. **The Bulk Sale License** grants the right to buy the electricity from any Generation Licensee or from the power systems of neighboring country for sale to Distribution Licensees or to the large customers in one connected power system.
7. **The Retail License** grants the right to engage in the sale of electric power to consumers in a contiguous service territory.
8. **The Subcontract License** grants the right to supply the electric power services according to the subcontract agreement with existing licensee.

4.2 Licenses issued and Area of Supply

Up to 31st December 2005, EAC has issued 123 licenses to grant the right to the electric power service providers to provide the electric power services pursuant to the Electricity Law. Type and number of licenses issued up to end of year 2005 are shown in Table 4 below.

Table 4: Types and Number of Licenses

No.	Type of License Issued	Number of License Issued		Number of License	
		up to 2004	during 2005	Not valid	Valid
1	Consolidated License consisting of Generation, Distribution and Transmission Licenses	1			1
2	Generation License	11	3	3	11
3	Distribution License	8	1		9
4	Consolidated License consisting of Generation and Distribution Licenses	87	12	1	98
TOTAL		107	16	4	119

The Generation Licenses No. 010L issued to Cambodia Wan Long International Industrial Co., Ltd, No. 025L issued to Santepheap Cambodia Investment Co., Ltd, and No. 005L issued to Mr. Chea Sopha were not extended beyond 30th June 2003, 15th August 2004, and 30th September 2004 respectively as the respective PPA were valid up to these dates. The Consolidate License No. 070L issued to Mr. Bou Boeun was revoked on the request of the licensee.

A map of Cambodia showing the location of the licensed area of supply and license numbers of licenses issued by EAC up to end of 2005 is given in Annex 8.

Electricité du Cambodge (EDC), a Government owned company has been granted the Consolidated License consisting of Generation, Distribution and National Transmission Licenses. The license gives it the right to provide transmission service for the entire Kingdom of Cambodia and to provide distribution service in its licensed areas and to operate generation facilities at different locations specified in the license. By end of 2005, EDC supplied electricity in its licensed areas of Phnom Penh, Sihanoukville, Provincial Town of Siem Reap, Provincial Town of Battambang, Provincial Town of Takeo, Provincial Town of Kampong Cham, Provincial Town of Kampot, Provincial Town of Prey Veng, Provincial Town of

Ratanakiri, Ponhea Krek District, Memot District and Bavit Commune and District center of Kampong Trach.

The Distribution licensees Franasic Import Export Co. Ltd, supply electricity in three district centers Kamrieng, Phnom Proeuk and Sampeou Loun in Battambang Province, Anco Brothers Co., Ltd, supply electricity to some areas of Ochraov District, Banteay Mean Chey Province and some areas of Koh Thom and Sa-Ang districts, Kandal Province, Duty Free Shop Co. Ltd supply electricity in two areas of Koh Kong Provincial Town and Osmarch Town of Oddor Meanchey Province. Other distribution licensees supply electricity in one area.

The consolidate licensee Electricity of Kratie Province supply electricity to two areas of Kratie Province – the Provincial Town and Part of Snoul District. Other Consolidate licensees supply electricity in one contiguous area. In some cases the area is spread over two provinces and hence the licensee operates in two provinces.

The areas of supply of the Licensees cover cities, provincial towns, other town centers as well as small villages. The supply in cities, major towns and areas supplied from neighboring countries is normally for 24 hours a day. But the demand in many rural areas during some hours of day is so low that supply is not viable during these hours and hence the supply is normally for a period less than 24 hours a day.

Annex 1 gives province wise area of supply served by Consolidated Licensees, Distribution Licensees and the normal hours of supply in these areas. The number of different types of licensees operating in each province/city as on 31st December 2005 is given in Table 5 below.

Table 5: Number of different types of Licensees operating in each Province/City

No.	Name of Province/ City	Consolidated License consisting of Generation, National Transmission and Distribution Licenses	Generation License	Distribution License	Consolidated License consisting of Generation and Distribution Licenses	Total
1	Banteay Meanchey	-	-	1	8	9
2	Battambang	1	1	1	7	10
3	Kampong Cham	1	1	1	13	16
4	Kampong Chhnang	-	1	1	5	7
5	Kampong Speu	-	-	-	8	8
6	Kampong Thom	-	-	-	7	7
7	Kampot	1	-	-	4	5
8	Kandal	1	-	2	15	18
9	Koh Kong	-	1	1	2	4
10	Kratie	-	-	-	1	1
11	Krong Kaeb	-	-	-	-	-
12	Mondol Kiri	-	-	-	-	-
13	Otdor Meanchay	-	-	1	1	2
14	Pailin	-	-	2		2

15	Phnom Penh	1	4	-	2	7
16	Phrea Vihear	-	-	-	1	1
17	Prey Veng	1	1	-	5	7
18	Pursat	-	1	1	4	6
19	Rattanakiri	1	-	-	-	1
20	Siem Reap	1	-	-	5	6
21	Sihanoukvill	1	-	-	4	5
22	Stueng Treang	-	-	-	-	-
23	Svay Rieng	1	-	-	-	1
24	Takeo	1	1	-	13	15

4.3 General Situation of Providing Electric Power Services by Licensees

The officers of EAC, during their field visits, have assessed the operation efficiency of many licensees and their observations on the situation of the electric power services in the Kingdom of Cambodia in general can be summarized by the contents of Table 6 below:

Table 6: Evaluation on General Situation of the Electric Power Service

Type of Service	Generation Efficiency or Fuel Consumption Rate, L/kWh	Distribution Efficiency	Management
Consolidated License of EDC	0.27 to 0.31	average loss 12%, good power quality	medium, many points need to improve further
Generation License	0.27	good power quality	Medium
Distribution License	-	average loss 11%, medium power quality	Lack of experience in electricity business
Big Consolidated License	0.32	average loss lower than 17%, medium power quality	Medium
Small Consolidated License	0.29 to 0.50	average loss 33%, low power quality	low, need to have more training

4.3.1 Situation of the Electric Power Service of the small Consolidated Licensees

During inspection of many electric power service locations, the Electricity Authority of Cambodia has noticed that most of the service providers in small towns and rural areas have the following deficiencies:

1. The electric power service facilities were obsolete or very old, not compliant with technical standards, unsafe in operation and use. This had resulted in very low efficiency of their business operation. Many licensees have improved their facilities by different degrees and many are yet to improve.

2. The licensees and their staff do not have enough knowledge relating to the operation and maintenance of the generation and distribution facilities for safe and efficient operation of electric power services.
3. The licensee and their staff do not have enough knowledge regarding business management, financial work, accounting, human resource management and customer relation services etc.

In general, the situation of the small licensee is low – the generation efficiency, distribution efficiency and safety are low, quality of management is poor, quality of service is under medium and there are many disputes about accuracy of meters.

About 30 to 40 %of small licensees have taken steps to make some improvement to their generation facilities. The condition of the generating facilities of other licensees can generally be stated as follows. The generator and engine do not match properly – most of them being assembly of two separate sets. This results in low efficiency of operation. The equipments to control voltage and load cannot be adjusted/operated to get the right operation. The control equipments are sub-standard and need careful handling to avoid danger. Meters are generally not provided to record energy generated and where provide it is not accurate. Provision for parallel operation of generators is not there.

The distribution network of most of the small-consolidated licensees is constructed in a temporary manner. The distribution networks of most of the licensees having term of license less than 4 years have the following characteristics:

- Poles do not have required strength and with height less than 5m.
- Most of the conductors are bare conductors and need to be changed to insulated conductor.
- The cross section of the conductor is not sufficient to maintain a voltage of more than 207 V at tail end of line.
- It is not safe to operate the system during rain.
- Earthing is not maintained properly.
- Do not have proper control equipment to automatically isolate the line in case of a fault.

4.4 Planning of EAC to improve the operation of Electric Power Services

In view of the situation described above and in order to carry forward the policy of the Royal Government to develop the electric power sector, and to ensure that the population get the benefit of use of electricity and also to help electric power service providers carry on their business efficiently, safely and sustainably, EAC has set up an action plan to promote electric power service providers to improve their situation in all fields stated above. This plan has three programs as stated below:

4.4.1 Methodology of Advising, Guiding and Training

The Electricity Authority of Cambodia provides advice and guidance to improve the facility and operation in 3 ways. First way is to visit and study at the site of the service providers and to advise them at site how to make improvements in the facility and operation, and to maintain required data. The advice given is specific to the situation of the facilities of

each licensee as well as general suitable to most of the licensees. Second way is to conduct workshops attended by the licensees and exchange ideas on improvement of the facilities and operation and the Third way is to provide training to the service providers.

The advice given by EAC included:

First advice: Wherever possible change from the use of DO to HFO. Examples of this are (i) Nareth Electricity Development Co., Ltd did not extend the term of the PPA with Jupiter Power (Cambodia) Co., Ltd at Kampong Chhnang Province and has signed the new PPA with Edward Energy Supply Co., Ltd, who is to use HFO to generate electricity resulting in lower generation cost than before and (ii) Mr. Sok Thy, holding License No. 029L providing electric power generation and distribution service at Phsar Veal Reinh Town, Khan Preynob, Sihanoukville has changed machines to generate electricity using HFO resulting in lower generation cost than before.

Second advice: prepare the generation schedule in order to run generators at loads more than 50% of its rated capacity. This program is difficult in practice because the small service providers do not understand well about the preparation of generation schedule to match the electricity load.

Third advice: improve of distribution system in accordance with technical standard in order to to have better efficiency and to reduce the power losses in the permissible range.

4.4.2 Methodology of Incentive and Penalties

Electricity Authority of Cambodia is following a transparent policy for deciding the term of the license of the electric power service providers. In cases, where improvement is made to the electricity facilities to comply with the technical standards and the business is managed efficiently, the licensees have the right to apply for extension of the term of the license and Electricity Authority of Cambodia grants a longer term license. In case the service provider fails to properly improve its electricity facilities, operation and management, Electricity Authority of Cambodia may consider taking actions as per license conditions including revocation of its license. The method of incentives has given encouraging results. Many licensees have improved their infrastructure and have been granted longer term of licenses. The Table below shoes the number of consolidate licenses having the same term at the end of 2004 and 2005.

Table 7: Current Term of Consolidate Licenses

Current Term	Licenses at the end of 2004		Licenses at the end of 2005	
	Number	%	Number	%
2 years	64	72.2	53	53.5
3 years	9	10.2	17	17.2
4 years	1	1.1	8	8.1
5 years	6	6.8	10	10.1
7 years	4	4.5	5	5.1
10 years	2	2.3	4	4
Till revoked	2	2.3	2	2
Total	88	100	99	100

4.4.3 Methodology of Financial Monitoring and Competition

In this methodology, Electricity Authority of Cambodia has 2 programs. First Program is to request the service providers to prepare the financial report and then monitoring of the financial statement of the service providers by EAC. Second Program is to set the tariffs for the small electric power service providers through a tariff table that will induce a competition between service providers with similar business condition. The service provider with better/proper facilities and operating the service efficiently will earn more profit. On the other hand, a service provider, who does not improve its facilities, may suffer loss in its business and get into difficulty, which may lead to closure of his business.

EAC has implemented the first and second programs in right earnest in the first stage to make small licensees ready for the third program so that the policy and program of MIME for development of electricity services is achieved.

4.5 Improvements in the operation of Electric Power Services

The licensees have appreciated and understood these programs. Many licensees have taken the lead in improving the electric power service infrastructure to achieve increased economic efficiency in generation and distribution of electricity and ensuring the public safety. These licensees have arranged funds for the improvements from their own financial resources. Some other licensees have taken up the improvements but have not been able to make the desired progress due to inadequate technical know-how and financial constraints and their facilities still do not fully comply with technical standards. The photographs illustrating the improvements made to the electricity facilities by two of the licensees are given below:

Electricity Facility of Mr. Kuy Sour at Phsar Suong Town, Khum Suong, Tbong Khmom District, (Kampong Cham)



Generator Set before Improvement



Generator Set after Improvement



Control Panel before Improvement



Control Panel after Improvement



Low Voltage System before Improvement



Medium and Low Voltage System after Improvement



Metering System before Improvement



Metering System after Improvement

The photographs above show the electric power service of Mr. Kuy Sour having license number 027L. Licensee has replaced old inefficient generation plant with efficient plant using light diesel oil (a very important factor to reduce the rate of fuel consumption per kilowatt-hour), constructed new power house, due to which he has been able to reduce noise pollution and other pollution and changed switchboard at generation side, and has improved the distribution infrastructure by improving medium voltage and low voltage system to comply with the electric power technical standard. His overall cost of supply will reduce and the income will increase. The license term has been extended by 10 years.

Electricity Facility of Mr. Mak Thorn at Phsar Tonlab Town, Khum Preahbath chanchum, Kirivong District, (Takeo)



Generator Set



Control Panel



Low Voltage System before Improvement



Medium and Low Voltage System after Improvement

The photographs above show the electric power service of Mr. Mak Thorn having license number 013L. As the licensee is planning to import electricity from Vietnam soon, the licensee has not improved his generation facilities but has improved the distribution infrastructure by improving medium voltage and low voltage system to comply with the electric power technical standard. Considering the improvements made by him, EAC has extended the term of his license by a further period of 7 years.

4.5.1 Improvement of the Generation facilities by Small Service Providers

Many other licensees have also made additions and improvements to their generation facilities. Some have replaced the less efficient generating plant by more efficient plant or added more plant capacity to meet the increasing demand and to ensure continuity in supply. Some have improved the power house and some have installed better control and protection panel. The improvements made to generation facilities by licensees during 2005 and their ranking depending on specific fuel consumption is given in the Table below.

Table8: Information on the Improvement of Generation facilities by Small Licensees

License Number	Licensee	Improvement of Generation Facilities
1 - Efficiency “Good” (fuel consumption rate less than 0.32 L/kWh)		
068L	Mrs. Tuoch Montha	Changed from genset using light diesel oil to Genset

		using a mixture of diesel oil and biomass, the diesel combustion rate is about 0.14 L/kWh.
2 - Efficiency “Medium” (fuel consumption rate in the range of 0.32 to 0.36 L/kWh)		
013L	Mr. Mak Thorn	Added two generator set with the total capacity of 112.5 kVA constructed onemore powerhouse at Phnom Den, fuel consumption rate is 0.36 L/kWh
028L	Mr. Samrith Sothy	Changed generator set 1 unit from 200 kVA to 250 kVA, fuel consumption rate is 0.34 L/kWh.
037L	Mr. Kry Bunthong	Changed generator set 1 unit from 60 kVA to 125 kVA, fuel consumption rate is 0.35 L/kWh.
054L	Mrs. Ouch Por	Changed generator set 1 unit from 20 kVA to 40 kVA, fuel consumption rate is 0.36 L/kWh.
069L	Mr. Nob Ben	Improved powerhouse, fuel consumption rate is 0.32 L/kWh.
081L	Mr. Moun Han	Improved powerhouse, fuel consumption rate is 0.35 L/kWh.
090L	Mr. Ven Veasna	Added one generator of 200 kVA, fuel consumption rate is 0.333 L/kWh.
093L	Mr. Khut Chenda	Added one generator of 40 kVA, fuel consumption rate is 0.331 L/kWh.
3 - Efficiency “Low” (fuel consumption rate of more than 0.36 L/kWh)		
049L	Mrs. Khiev Nareth	Construct new powerhouse, fuel consumption rate is 0.37 L/kWh.
071L	Mr. Heng Tray	Changed generator 1 unit of 125 kVA, fuel consumption rate is 0.418 L/kWh.
079L	Mr.Thon Theung	Improved powerhouse, fuel consumption rate is 0.38 L/kWh.
080L	Mr. Sok Vitith	Improved powerhouse, fuel consumption rate is 0.37 L/kWh.
108L	Mrs. Sin Savuon	Improved powerhouse, fuel consumption rate is 0.38 L/kWh.

4.5.2 Improvement of the Distribution facilities by Small Service Providers

Many service providers have made improvements to their distribution system such as 1 - changed from single-phase system to 3 phase systems, 2 - changed conductor of proper cross-section 3 – improved the system by introducing medium voltage 22kV system, 4 – changed from wooden pole or steel tubes to concrete poles to meet the technical standards and 5 – update meter and use of proper capacity meters to meet the load capacity. Information relating to the improvement of the electricity distribution facilities during 2005 is shown in the Table below.

Table 9: Information on Improvement of Distribution Facilities by Small Licensees

License Number	Licensee	Improvement of Distribution Facilities
1 - Efficiency “Good” (License term 5 years and more)		

027L	Mr. Kuy Sour	Improved whole distribution facilities (22kV Medium and low voltage system) to comply with the electric power technical standard. License term extended by 10 years.
013L	Mr. Mak Thorn	Extended distribution areas along the national road No. 2 from Cambodia-Vietnam border to Kirivong district, Takeo province; constructed low voltage system ABC 70 & 50mm ² length of 1,400m and A-A 35mm ² length of 400m. License term extended by 10 years.
044L	Mr. Kong Puthy	Improved all low voltage system by using conductor ABC AL 2x25mm ² length of 400m, ABC AL 3x25mm ² length of 1,728m, PVC AL 4x35mm ² length of 685m, ABC AL 4x70mm ² length of 1,000m, PVC AL 4x70mm ² length of 2,884m and constructed medium voltage 22kV system type bare conductor AL 3x35mm ² length of 600m. License term 5 years.
011L	Anco Brothers Co., Ltd	Extended distribution areas from Poipet to Koun Dam Rey area 11,000m and improved low voltage lines 1,800m in Poipet area. License term 5 years.
052L	Nareth Electricity Development Co., Ltd	Improved big parts of low and medium voltage. License term 5 years.
061L	Mr. Khoeun Sambath	Improved low voltage system by using conductor ABC AL 4x50mm ² length of 940m and ABC AL 4x35mm ² length of 200m. License term 5 years.
074L	Mr. Mean Vanna	Improved low voltage system by using conductor ABC AL 4x70mm ² length of 2,000m and PVC AL 4x50mm ² length of 1,000m. License term 5 years.
079L	Mr. Thon Theung	Improved low voltage system by using conductor PVC AL 4x70mm ² length of 900m and erected 21 concrete poles. License term 5 years.
2 - Efficiency “Medium” (License term from 3 to 4 years)		
080L	Mr. Sok Vitith	Improved low voltage system by using conductor PVC AL 3x95mm ² length of 500m, 2x70mm ² length of 500m and erected 32 concrete poles. License term 4 years.
064L	Mr. Chhin Seng	Improved low voltage system by using conductor PVC AL 90mm ² length of 500m, PVC AL 70mm ² length of 1,500m, PVC AL 50mm ² length of 1,000m and PVC AL 35mm ² length of 1,500m and replaced from wood poles to concrete poles with the amount of 65 poles. License term 4 years.
049L	Mrs. Khiev Nareth	Improved 5,820m single phase to three-phase low voltage system. License term 4 years.
082L	Mr. Ly Sokry	Improved low voltage system by using conductor ABC 4x35mm ² length of 2,700m and changed 65 poles. License term 4 years.
054L	Mrs. Ouch Por	Improved low voltage system by using conductor PVC AL 50mm ² length of 2,800m. License term 3 years.
055L	Mr. Park Hean	Improved low voltage system by using conductor ABC AL 3x35mm ² length of 250m and changed 13 poles. License term 3 years.
056L	Mr. Sieng Khun	Improved low voltage system by using conductor PVC AL

		4x125mm ² length of 600m. License term 3 years.
065L	Mr. Chuo Sroan	Improved low voltage system by using conductor 4x50mm ² length of 500m. License term 3 years.
069L	Mr. Nob Ben	Improved low voltage system by using conductor 4x70mm ² length of 300m. License term 3 years.
077L	Ms. Chav Noy	Improved low voltage system by using conductor 4x95mm ² length of 400m. License term 3 years.
078L	Mr. Vorn Yeang	Improved low voltage system by using conductor PVC AL 4x70mm ² length of 200m and erected 30 new concrete poles. License term 3 years.
081L	Mr. Moun Han	Improved low voltage system by using conductor PVC AL 4x150mm ² length of 600m and 2x150mm ² length of 500m erected 25 new concrete poles. License term 3 years.
084L	Mr. Mok Chen	Improved low voltage system by using conductor PVC AL 25mm ² length of 210m, PVC AL 35mm ² length of 243m, PVC AL 50mm ² length of 198m and PVC AL 70mm ² length of 160m and replaced 10 wooden poles. License term 3 years.
3 - Efficiency “Low” (License term less than 3 years)		
108L	Mrs. Sin Savuon	Erected 20 new concrete poles. License term 2 years.
043L	Mr. Lay Se	Improved low voltage system by using conductor 4x70mm ² length of 1,000m. License term 2 years.
038L	Mr. Sieng Seng	Improving whole distribution facilities to comply with the electric power technical standard. License term 2 years.
037L	Mr. Kry Bunthong	Improved low voltage system by using conductor PVC AL 70mm ² length of 700m, PVC AL 50mm ² length of 1,000m and ABC AL 4x35mm ² length of 1,000m. License term 2 years.
113L	Mr. Nou Kruey	Improved low voltage system by using conductor ABC AL 4x70mm ² length of 100m. License term 2 years.

Chapter 5

Cost of Electricity from Independent Power Producers And Neighboring Countries And Electricity Tariff of Licensees

CHAPTER 5
Cost of Electricity from Independent Power Producers and Import from Neighboring Countries and Electricity Tariff of Licensees

5.1 Cost of Electricity from Independent Power Producers

Cost of Electricity per kilowatt-hour in a month in the year 2005 from each Independent Power Producer that generated electricity for sale to EDC at different locations and sale to distribution licensees at some provincial towns are given below.

Table 10: Cost of Electricity per kWh from Independent Power Producers

Name of Independent Power Producer	Cost in US Cents per kWh for the first 6 months of the year 2005					
	Jan	Feb	Mar	Apr	May	Jun
CETIC, Kirirom 1	7.00	7.00	7.00	7.00	7.00	7.00
CUPL, Phnom Penh	12.94	12.87	13.82	14.23	15.00	15.04
Jupiter, Phnom Penh	16.27	16.07	16.63	18.44	19.30	18.18
Jupiter, Kampong Chhnang	20.70	20.46	21.12	23.27	24.28	22.96
Edward Energy Supply Co., Ltd, Pursat	16.68	17.08	17.48	18.18	18.46	19.33
GTS, Kampong Cham	18.42	18.42	19.03	20.92	21.17	20.23
GPS, Prey Veng	17.69	18.35	20.49	21.50	20.17	21.52
J.P.N Cambodia International Co., Ltd Takeo	16.64	17.29	19.44	19.93	18.74	20.48
Khmer Electrical Power Co., Ltd Phnom Penh	-	-	10.04	11.07	11.47	11.60
City Power Group Corporation Phnom Penh	-	-	-	-	12.37	12.50

Name of Independent Power Producer	Average Tariff in US Cents per kWh for the last 6 months of the year 2005					
	Jul	Aug	Sep	Oct	Nov	Dec
CETIC, Kirirom 1	7.00	7.00	7.00	7.00	7.00	7.00
CUPL, Phnom Penh	15.29	15.52	15.73	16.87	16.90	16.82
Jupiter, Phnom Penh	19.31	20.40	19.96	20.99	21.05	18.60
Jupiter, Kampong Chhnang	24.31	25.59	-	-	-	-
Edward Energy Supply Co., Ltd Kampong Chhnang	-	-	20.11	20.55	20.55	20.13
Edward Energy Supply Co., Ltd, Pursat	19.58	20.33	20.83	21.24	21.24	19.95
GTS, Kampong Cham	21.88	22.19	22.44	23.34	22.81	20.78
GPS, Prey Veng	22.80	22.29	23.50	23.57	20.68	20.75
J.P.N Cambodia International Co., Ltd Takeo	21.14	20.99	22.08	21.93	19.51	19.66
Khmer Electrical Power Co., Ltd Phnom Penh	11.88	12.19	13.17	12.95	12.61	12.38
City Power Group Corporation Phnom Penh	12.94	12.65	14.38	13.73	13.68	13.44

Remarks:

- At provincial town of Kampong Chhnang, Jupiter Power (Cambodia) Co., Ltd closed its generation from September 2005 and Edward Energy Supply Co., Ltd started its operation from that time with lower tariff.

5.2 Cost of Electricity per kWh Imported from Neighboring Countries

Cost of electricity imported from Vietnam and Thailand is charged according to the agreements signed with the two countries. Accordingly during 2005, Vietnam charged a fixed rate of 6.9 US cents per kWh for electricity imported at medium voltage at different connection points. During 2005, electricity was imported from Vietnam at Memut and Ponhea Krek in Kampong Cham Province, Bavit in Svay Rieng Province, Kampong Trach in Kampot Province, Koh Thom in Kandal Province and Snoul in Kratie Province.

Cost of electricity from Thailand is as per the tariff of Provincial Electricity Authority for the applicable category of consumer. During 2005, the tariff for import from Thailand was a two part – time of use tariff. The tariff has demand charges (Baht per kilowatt of maximum demand), energy charges (Baht per kWh with different rates for energy drawn during peak and off-peak hours), service charges (fixed charge as Baht per month), power factor penalty (Baht per excess KVAR) and Ft (change in expenses charge in Baht/kWh). Because of such tariff structure, the cost of electricity may vary in different months due to different use conditions. The cost of electricity per kilowatt-hour in a month during 2005 imported from Thailand by licensees is given below.

Table 11: Cost of Electricity per kWh from Thailand

Licensee	Cost of Electricity in Baht per kWh for the first 6 months of the year 2005					
	Jan	Feb	Mar	Apr	May	Jun
Anco, Poipet	2.61	2.62	2.72	2.51	2.57	2.62
DFS, Kohkong	2.67	2.75	2.71	2.55	2.64	2.71
DFS, Osmach	2.75	2.76	2.75	2.56	2.67	2.76
MSP, Pailin	2.79	2.77	2.82	2.62	2.68	2.79
Franasie, Kamrieng	2.75	2.74	2.78	2.66	2.64	2.78
Franasie, Sampeou Loun	3.02	3.01	3.04	2.86	2.92	3.08
Franasie, Phnom Preuk	2.88	2.86	2.93	2.76	2.81	2.93

Licensee	Cost of Electricity in Baht per kWh for the last 6 months of the year 2005					
	Jul	Aug	Sep	Oct	Nov	Dec
Anco, Poipet	2.61	2.64	2.71	2.82	2.75	2.73
DFS, Kohkong	2.60	2.72	2.73	2.80	2.85	2.76
DFS, Osmach	2.65	2.76	2.75	2.84	2.89	2.82
MSP, Pailin	2.68	2.79	2.83	2.89	2.97	2.91
Franasie, Kamrieng	2.66	2.76	2.79	2.84	2.92	2.87
Franasie, Sampeou Loun	2.91	3.02	3.16	3.18	3.20	3.14
Franasie, Phnom Preuk	2.83	2.91	2.97	3.01	3.07	3.03

5.3 Electricity Tariff Purchased from Neighboring Licensees

During 2005, three licensees purchased electricity from another distribution or consolidate licensee. The tariff applicable for such purchases is as follows:

1. Reeco Company supplying electricity in Kandal Province purchased energy from EDC at a tariff of 480 Riels per kWh
2. Vannakpheap Development Co., Ltd supplying electricity in Pailin City purchased energy from MSP Development Co., Ltd at a tariff of 6 bahts per kWh.
3. Electricity Development and Construction Company supplying electricity in Kampong Cham Province purchased energy from EDC at a tariff of 11 US Cents per kWh.

5.4 Electricity Tariff

5.4.1 Tariff of EDC for Phnom Penh and Kandal Province

The electricity tariff of EDC for Phnom Penh and Kandal Province, from the year 2004, continued to be valid up to 30 May 2005, and is given below.

Table 12: Tariff of EDC for Phnom Penh and Kandal Province

Category of Consumer	Description	Riels/kWh
Domestic	Consumption up to 50 kWh/Month	350
	Consumption between 51 and 100 kWh/Month	550
	Consumption more than 101 kWh/Month	650
Government Institutions		700
Embassy, NGO, Foreigner's Residence		800
Commercial and Service Sector	Small	650
	Medium	600
	Big	500
	Medium Voltage	480
Industrial	Small	600
	Medium	550
	Big	500
	Medium Voltage	480
The four types of Commercial and Industrial Customers are defined as follows:		
Small - The Customer who is connected to the public LV network of 220V or 380V.		
Medium - The Customer who is directly connected to MV/LV Substation by separate LV feeder and has installed their metering system on this feeder and guarantees a monthly minimum take of 20,000 kWh		
Big - The Customer who has separate substation or partly uses the capacity of public substation and has metering system indoor or adjacent to their substation and guarantees a monthly minimum take of 50,000 kWh.		
Medium Voltage - The Customer who is directly connected to MV network with MV metering and guarantees a monthly minimum take of 80,000 kWh.		

During the year 2005, EAC approved two revisions of the tariff of EDC for Phnom Penh and Kandal Province according to EDC proposal, due to increased cost of supply mainly due to increase of the cost of fuel. The revision of tariff was approved in EAC's session No. 53 dated June 30, 2005 and session No. 57 dated October 26, 2005 as given in the Tables below.

Table 13: Tariff of EDC for Phnom Penh and Kandal Province effective from invoices issued from 1st July 2005

Category of Consumer	Electricity Tariff, Riels/kWh	Condition
Domestic	350	Consumption up to 50 kWh/Month
	550	From 51 to 100 kWh/Month
	650	From 101 kWh/Month above.
Embassy, NGO, and Foreigner's Residence	800	
Customer paid by Government budget	700	
Commercial (business) and Industrial customers	650	For small commercial and Industrial customers
	Tariff rate = average price of the total electricity purchased last month + 0.028 \$US/kWh	For medium commercial and Industrial customers
	Tariff rate = average price of the total electricity purchased last month + 0.024 \$US/kWh	For big commercial and Industrial customers
	Tariff rate = average price of the total electricity purchased last month + 0.020 \$US/kWh	For commercial and Industrial Customer who is directly connected to MV

Table 14: Tariff of EDC for Phnom Penh and Kandal Province effective from invoices issued from 1st November 2005

Category of Consumer	Electricity Tariff, Riels/kWh	Condition
Domestic	390	All kWh if consumption up to 50 kWh/Month
	610	All kWh if consumption between 51 to 100 kWh/Month
	720	All kWh if consumption more than 100 kWh/Month.
Embassy, NGO and Foreigner's Residence	890	
Customer paid by Government budget	780	

Commercial (business) and Industrial customers	Tariff rate = average price of the total electricity purchased last month + 0.036 \$US/kWh	For small commercial and Industrial customers
	Tariff rate = average price of the total electricity purchased last month + 0.028 \$US/kWh	For medium commercial and Industrial customers
	Tariff rate = average price of the total electricity purchased last month + 0.024 \$US/kWh	For big commercial and Industrial customers
	Tariff rate = average price of the total electricity purchased last month + 0.020 \$US/kWh	For commercial and Industrial Customer who is directly connected to MV

In the tariff of EDC for Phnom Penh and Kandal Province approved by EAC to be effective from the invoice issued from 1st July 2005, the tariff rate of medium, big and MV commercial and industrial consumers for a month is calculated on the basis of average price of the electricity purchased during last month. In the next tariff approved by EAC to be effective from invoices issued from 1st November 2005, the tariff rate of small commercial and industrial consumer in a month also is calculated on the basis of average price of the electricity purchased during last month. The tariff rate for commercial and industrial consumers calculated on the above basis for different months is given in the following Table.

Table 15: Tariff of EDC for Phnom Penh and Kandal Province for Commercial and Industrial Consumers

Category of Consumers	Tariff for Commercial and Industrial Consumers in \$US						
	June 2005	July 2005	August 2005	Sept 2005	Oct 2005	Nov 2005	Dec 2005
Small	-	-	-	-	0.1758	0.1807	0.1786
Medium	0.1668	0.1638	0.1661	0.1613	0.1678	0.1727	0.1706
Big	0.1628	0.1598	0.1621	0.1573	0.1638	0.1687	0.1666
MV	0.1588	0.1558	0.1581	0.1533	0.1598	0.1647	0.1626

5.4.2 Tariff of EDC at Provincial Towns, Cities and Big Town Centers

The electricity tariff of EDC at provincial towns, cities and big town centers remained unchanged up to 31 October and is given in Table below.

Table 16: Tariff of EDC at Provincial Towns, Cities and Big Town Centers

Areas	Description	Tariff	
		Riels/kWh	US Cents/kWh
Sihanoukville			
Domestic		500	
Industrial	Consumption up to 20,000 kWh/Month		17.5
	Consumption 20,001 to 50,000 kWh/Month		
	Day Hours		16.0

	Night Hours		17.5
	Consumption 50,001 to 110,000 kWh/Month		
	Day Hours		14.7
	Night Hours		17.5
	Consumption more than 110,000 kWh/Month		
	Day Hours		13.5
	Night Hours		17.5
Commercial	Consumption up to 20,000 kWh/Month		19.5
	Consumption 20,001 to 50,000 kWh/Month		18.0
	Consumption 50,001 to 110,000 kWh/Month		16.4
	Consumption more than 110,000 kWh/Month		15.0
Hotels, House rented by foreigners	Consumption up to 20,000 kWh/ Month		20.0
	Consumption 20,001 to 50,000 kWh/ Month		18.4
	Consumption 50,001 to 110,000 kWh/ Month		17.0
	Consumption more than 110,000 kWh/Month		16.0
Embassy and Government Institutions		760	
Day Hours = 00 to 18 Hours; Night Hours = 18 to 24 Hours			
Provincial Town of Siem Reap	Consumption up to 20,000 kWh/Month	780	
	Consumption 20,001 to 50,000 kWh/Month	750	
	Consumption 50,001 to 110,000 kWh/Month	700	
	Consumption more than 110,000 kWh/Month	650	
Provincial Town of Kampong Cham	All Categories	850	
Provincial Town of Battambang	All Categories		24.5
Provincial Town of Takeo	All Categories	900	
Memot, Pohnea Krek and Bavet	Low Voltage	650	16.0
	Medium Voltage		11.5

5.4.3 Tariff of EDC at places under ADB Loan Project

Asian Development Bank has provided Loan No. ADB No. 1794-CAM (SF) to EDC for development of new electric power generation and distribution network at some provincial towns which will be put into commercial operation in near future. EAC has approved the electricity tariff in EAC's session No. 52 dated June 6, 2005 for EDC's distribution areas covered by the above loan to be effective only after the development under the loan project is implemented. The approved tariff is given in the table below.

Table 17: Tariff of EDC at Provincial Towns, Cities and Big Town Centers effective after the improvement under the ADB Credit is implemented

Distribution Areas of EDC	Electricity Tariff, Riels/kWh	Condition
Provincial Town of Banteay Meanchey and Monkol Borey District Town	1,100	For all Consumers
Provincial Town of Kampot	1,100	For all Consumers

Provincial Town of Svay Rieng, Kampong Ro and Svay Teap District Towns	650	For all Consumers
Provincial Town of Steung Treng	1,100	For all Consumers
Provincial Town of Prey Veng	1,100	For all Consumers
Provincial Town of Kampong Speu	650	For all Consumers
Provincial Town of Rattanakiri	600	For all Consumers

5.4.4 Electricity Tariff of EDC at Provincial Towns, Cities and Big Town Centers Revised dated October 26, 2005

EAC have approved to revise the electricity tariff in distribution areas of EDC for provincial towns/cities and some big town centers in EAC's session No. 57 dated October 26, 2005 as given in Tables below. The revised tariff is effective from the invoices issued from 1st November 2005.

Table 18: Electricity Tariff of EDC for Provincial Town of Kampong Speu effective from invoices issued from 1st November 2005

Category of Consumer	Electricity Tariff, Riels/kWh	Condition
Domestic	720	
Embassy, NGO and Foreigner's Residence	890	
Customer paid by Government budget	780	
Commercial (business) and Industrial customers	Tariff rate = average price of the total electricity purchased last month + 0.036 \$US/kWh	For small commercial and Industrial customers
	Tariff rate = average price of the total electricity purchased last month + 0.028 \$US/kWh	For medium commercial and Industrial customers
	Tariff rate = average price of the total electricity purchased last month + 0.024 \$US/kWh	For big commercial and Industrial customers
	Tariff rate = average price of the total electricity purchased last month + 0.020 \$US/kWh	For commercial and Industrial Customer who is directly connected to MV

Table 19: Electricity Tariff of EDC for Sihanoukville effective from invoices issued from 1st November 2005

Consumer	Category	New Electricity Tariff per kWh
Domestic	all	720 Riels
Embassy, NGO and Foreigner's Residence	Small	0.200\$US
	Medium	0.184\$US

	Big	0.170\$US
	Medium Voltage	0.160\$US
Customer paid by Government budget	all	720 Riels
Commercial customer	Small	0.195\$US
	Medium	0.180\$US
	Big	0.164\$US
	Medium Voltage	0.150\$US
Industrial and workshop customer	Small	0.175\$US
	Medium	0.160\$US
	Big	0.147\$US
	Medium Voltage	0.135\$US

Table 20: Electricity Tariff of EDC for Provincial Town of Siem Reap effective from invoices issued from 1st November 2005

Category of Consumer	New Electricity Tariff, Riels/kWh
Small consumer	870
Medium consumer	830
Big consumer	780
MV Customer	720

The category of consumers of EDC at provincial town of Siem Reap are defined as follows.

Small consumer – Consumers connected to the public LV network, do not have minimum limitation usage condition.

Medium consumer - Consumers connected to feeder from separate transformer substation and should guarantee minimum electricity take of 20,000 kWh per month.

Big consumer - Consumer connected to the transformer substation located in or next to his/her location and should guarantee minimum electricity take of 50,000 kWh per month. No prohibition for other customers to use this transformer substation.

Customer who is directly connected to MV (MV customer) – Consumer connected to medium voltage system and should guarantee minimum electricity take of 80,000 kWh per month.

Table 21: Electricity Tariff of EDC for Provincial Towns and other Big Town Centers effective from invoices issued from 1st November 2005

Distribution Areas of EDC	Electricity Tariff per kWh	Condition
Provincial Town of Kampong Cham	940 Riels	all consumer
Provincial Town of Steung Treng	1,220 Riels	all consumer
Provincial Town of Rattanakiri	670 Riels	all consumer

Provincial Town of Banteay Meanchey and Monkol Borey District Town	1,220 Riels	all consumer
Provincial Town of Kampot	1,220 Riels	all consumer
Provincial Town of Prey Veng	1,220 Riels	all consumer
Provincial Town of Battambang	0.272\$US	all consumer
Provincial Town of Takeo and Ang Tasom Center	1,000 Riels	all consumer

5.4.4 Electricity Tariff of Licensees approved and revised by EAC

Besides the electricity tariff of EDC, during 2005 EAC has approved the electricity tariff of other licensees is given in the Tables below.

Table 22: Electricity Tariff of Licensees approved by EAC

Licensee, Distribution Area and date from which tariff is effective	Electricity Tariff per kWh	Condition
Chilbo Industrial (Cambodia) Co., Ltd (Provincial Town of Kampong Thom) effective from January 15, 2005	1,200 Riels	all consumers
Anco Brothers Co., Ltd Koh Thom and Saang District (Kandal) Effective from July 18, 2005	650 Riels	all small and medium consumer (LV)
	0.115\$US	Big consumer (factory - industrial)
	According to the Contract	Industrial areas, in according with the contract between company and consumer, which is this contract shall be prior approved from EAC.
Electricity of Kratie Province Snoul District (Kratie) Effective from June 30, 2005	600 Riels	Consumer connected to LV
	0.115\$US	Consumer connected to MV
E.D.Con. Co., Ltd Stoeng Town, Ponhea Krek District (Kampong Cham) Effective from December 28, 2005	750 Riels	Overall small and medium consumer, which is used electricity less than 20,000 kWh per month.
	0.125\$US	Big consumer, which is used electricity from 20,001 kWh over per month.

Table 23: Electricity Tariff of Licensees at Provincial Town of Pursat and Provincial Town of Kampong Chhnang

Category of Consumer	Electricity Tariff \$UD per kWh
Small consumer	0.328
Medium consumer	0.310
Big consumer	0.290
MV Customer	0.270

The category of consumers of Nareth Electricity Development Co., Ltd at Provincial town of Pursat and Sovanny Electricity Development Co., Ltd at provincial town of Kampong Chhnang are defined as follows.

Small consumer – Consumers connected to the public LV network, do not have minimum limitation usage condition.

Medium consumer - Consumers connected to feeder from separate transformer substation and should guarantee minimum electricity take of 20,000 kWh per month.

Big consumer - Consumer connected to the transformer substation located in or next to his/her location and should guarantee minimum electricity take of 50,000 kWh per month. No prohibition for other customers to use this transformer substation.

Customer who is directly connected to MV (MV customer) – Consumer connected to medium voltage system and should guarantee minimum electricity take of 80,000 kWh per month.

The new electricity tariff in table 23 above is applied for electricity invoice issued to electricity consumers from January 1, 2006.

5.4.5 Electricity Tariff at electricity supply areas of other licensees

Information on electricity tariffs at electricity supply areas of other licensees is shown in **Annex 7**.

Chapter 6

Report on Generation, Import, Transmission and Supply of Electricity

CHAPTER 6

Report on Generation, Import, Transmission and Supply of Electricity

The present power system in the Kingdom of Cambodia still consists of many isolated systems; does not have grid interconnection lines. Phnom Penh, provincial towns and other small towns have their own power system. Licensees in small towns, close to Cambodia - Vietnam border and Cambodia - Thai border, purchase electricity from neighboring countries for supply to the consumers in their areas but other areas have their own generation facilities. The biggest power system is Phnom Penh power system. It supplies electricity to Phnom Penh and areas around it.

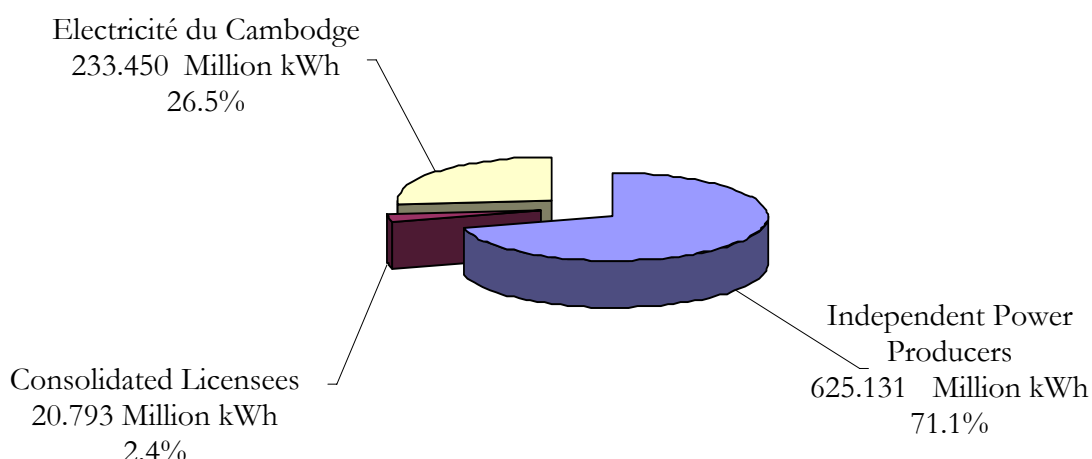
6.1 Electricity Generation and Installed Capacity

6.1.1 Generation by Licensee category

Two types of licensees generate electricity in the Kingdom of Cambodia. Independent Power Producers who have generation licenses generate and sell electricity to a supplier as per Power Purchase Agreement with that supplier and Consolidated Licensees generate electricity for supply through its distribution system. Electricité du Cambodge is the biggest consolidated licensee.

The information on operation data of individual Generation Licensees, Electricite du Cambodge and Consolidated Licensees is given in **Annex 3**, **Annex 5** and **Annex 6** respectively. The summary information about installed capacity and energy sent out by the Independent Power Producers, EDC and Consolidated licensees is given in **Annex 2(a)**. The quantum of energy sent-out by the Independent Power Producers, EDC and Consolidated licensees is shown in the graphic given below.

Energy sent out for the Year 2005



6.1.2 Generation by Type of Generation Facilities

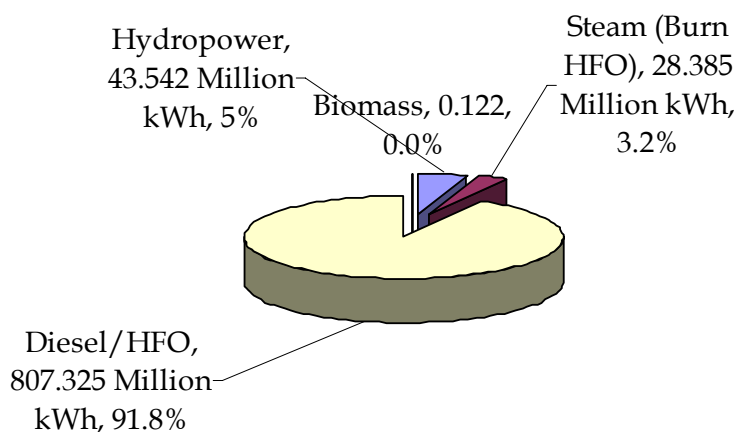
For the year 2005, electricity generation facilities in the Kingdom of Cambodia can be divided into 4 types: 1 - Hydropower Plants, 2 - Steam Turbine Power Plants, 3 - Diesel power

Plants and 4 – Wood and other Biomass. There are two Hydropower Plants, one at Kirirom connected to Phnom Penh power system and the other one at Ratanakiri connected to Ratanakiri power system of EDC. The only Steam Turbine Power Plant is installed at C2 power plant at Phnom Penh. Mr. Dung Lay, supplying electricity at Ang Long Tamey, and Mrs. Touch Montha, supplying electricity at Khum Phnom Sampov, in Battambang Province use wood and agricultural products as fuel for generation of electricity. All other power plants of the licensees are diesel power plants using Heavy Fuel Oil (HFO) and Light Diesel Oil (LDO). The summary information on installed capacity and energy sent out by type of generation is given in **Annex 2(b)**.

Due to good monsoon, the quantum of energy generated by Hydro Power Plants in 2005 was more than that in 2004 but however the quantum of energy generated by Hydro Power Plants in 2005 was still behind the planning. The energy generated by the Hydro Power Plant of Cetic at Kirirom increased from 27.005 million kWh in 2004 to 40.854 million kWh in 2005.

As the Steam Turbine Power Plant at C2 power plant is very old and not efficient, EDC has completely stopped this Steam Turbine Power Plant in July, 2005. Hence, the quantum of energy generated by Steam Turbine Power Plant in 2005 is less than 2004. Proportion of energy generated by steam power plant has decreased from 8.9% in 2004 to 3.23% in 2005. The quantum of energy sent-out by the Independent Power Producers, EDC and Consolidated licensees classified by generation type is shown in the graphic given below.

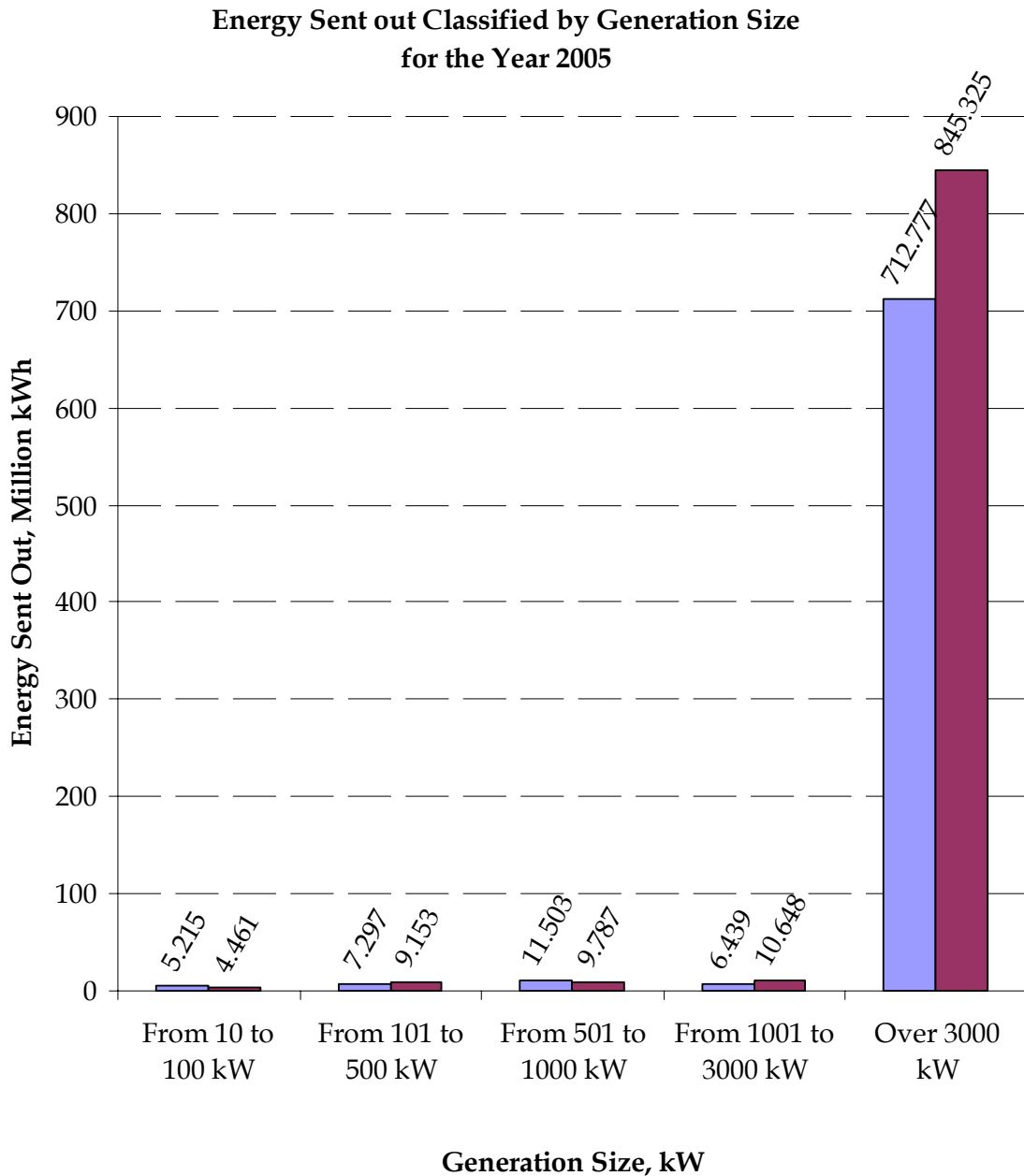
**Energy Sent-Out Classified by Generation Type
for the Year 2005**



6.1.3 Generation by Capacity of Generation Plant

The capacity of the machines for the generation facilities of the Licensees varies widely. The biggest capacity of the machines is 8,032 kW and the smallest capacity of the machines is 12 kW. Similarly the capacity of the generation plant at different power houses also varies widely. The largest plant capacity of 37,100 kW is that of CUPL at Phnom Penh and the smallest plant capacity of a licensee is 12 kW of Mr. Dung Ly at Phum Ang Long Tamey,

Khum Chheuteal, Banorn District, Battambang province, which is the power plant operated by biomass energy. Summary information about the energy sent-out classified by generation plant size is shown in **Annex 2(c)**. The quantum of energy sent-out by the Independent Power Producers, EDC and Consolidated licensees classified by generation plant size is shown in the graphic given below.



6.1.4 Installed Capacity in all 24 cities/Provinces

The province-wise information on the installed generation capacity of licensees operating in different cities/provinces as on December 31, 2005 is given in Table below.

Table 24: Information on total installed generation capacity of Licensees in each City/Province

No.	Name of City/Province	Installed Capacity, kW
1	Banteay Meanchey	646.6
2	Battambang	7,470
3	Kampong Cham	5,489.6
4	Kampong Chhnang	3,615
5	Kampong Speu	13,166
6	Kampong Thom	2,890
7	Kampot	611
8	Kandal	1,942
9	Koh Kong	816
10	Kratie	160
11	Krong Kaeb	-
12	Mondol Kiri	-
13	Otdor Meanchay	92
14	Pailin	-
15	Phnom Penh	164,898
16	Phrea Vihear	460
17	Prey Veng	3,682
18	Pursat	2,188
19	Ratanakiri	960
20	Siem Reap	11,166
21	Sihanoukvill	8,616
22	Stueng Treang	-
23	Svay Rieng	-
24	Takeo	2466

6.2 Energy Imported from Neighboring Countries

As a result of the cooperation between the Royal Government of Cambodia and The Government of Thailand and the Government of Vietnam, the Distribution Licensees operating in the areas close to the Cambodia - Thai and Cambodia - Vietnam borders are allowed to purchase electricity from Thailand and Vietnam to supply in their areas of supply. Based on the Electricity Trade Agreement between Ministry of Industry, Mines and Energy of Cambodia with the Ministry of Industry of Vietnam, EDC has signed the Power Purchase Agreement with Vietnam Power No.2 for supply of electric energy to areas of Memot, Krek, Bavit and Kampong Trach located near the Cambodia – Vietnam border. Some private companies have received the right from MIME to purchase electricity from Provincial Electricity Authority of Thailand for supply to areas near Cambodia – Thai border. At present the import of power from Vietnam and Thailand is at a voltage of 22 kV.

Contracted capacity and quantity of electricity imported for year 2004 and 2005 and the name of licensees and areas of supply are shown in the Table below:

Table 25: Contracted capacity and Energy Imported from Neighboring Countries

Name of the Licensee	Area of Supply	Contracted Capacity, kW	Energy Imported, kWh		Incremental %
			Year 2004	Year 2005	
1. Energy Imported from Thailand					
Fransie Import Export Co., Ltd	District Center of Kamrieng	1,000	2,518,464	3,105,732	23.3
	District Center of Phnom Preuk	1,000	626,928	770,808	23.0
	District Center of Sampeou Loun	1,000	806,532	1,160,508	43.9
M.S.P. Development Co. Ltd	Phum Phsar Prum	2,500	4,301,200	4,887,880	13.6
Anco Brothers Co., Ltd.	Ochraov District	5,000	20,086,720	29,072,880	44.7
Duty Free Shop Co. Ltd	Provincial Town of Koh Kong	2,000	12,564,240	12,624,000	0.5
	Osmarch Town	2,000	5,114,440	5,216,420	2.0
2. Energy Imported from Vietnam					
Electricité du Cambodge	Ponhea Krek District	700	3,967,300	7,733,000	94.9
	Memot District	1,750	3,872,700	6,527,100	68.5
	Bavit commune	800	4,928,100	8,619,000	74.9
	Kampong Trach	1,000	700,500	1,044,500	49.1
Anco Brothers Co., Ltd	Koh Thom and Saang District (July to December 2005)	1,000	-	497,400	
Electricity of Kratie Province	Snoul District, Kratie Province (June to December 2005)		1000	986,600	
Total		19,750	59,487,124	82,245,828	38.3

6.3 Electricity Transmission

6.3.1 High Voltage Transmission and Grid-Substation

In the year 2005 two high voltage lines exist: 1–115kV line around Phnom Penh and 2–115kV line from Kirirom 1 hydropower plant to Phnom Penh distribution system. Considering the purpose of utilization, the 115kV line around Phnom Penh is considered as operating for distribution services and 115kV transmission line that transmit electricity from Kirirom 1 hydropower plant to Phnom Penh's distribution system is considered as operating for transmitting electricity.

The summary information on High Voltage Transmission is given in Table 26 and on Grid-Substation is given in Table 27 below.

Table 26: Information about High Voltage Transmission Lines

No.	Name of Transmission Line	Ownership	Detail Information
1	Transmission line around Phnom Penh	EDC	Voltage: 115 kV Length: 22.71 Km Purpose: connects all 3 Grid - substation in Phnom Penh to stabilize and provide continuous of electricity supply
2	Transmission (Overhead Line) Kirirom 1 – Kampong Speu – Phnom Penh	EDC	Voltage: 115 kV Length: 111.24 Km Purpose: transmit electricity from Kirirom 1 hydropower plant to Kampong Speu and Phnom Penh

Table 27: Information about High Voltage Grid-Substation

No.	Name of Substation	Ownership	Detail Information
1	Substation No. 1 – Phnom Penh	EDC	Voltage: 115/22/15 kV Number and Size of Transformers: 2 x 30 MW Number of Outgoing Distribution Feeders: 15 Number of Incoming Distribution Feeders: 4 Total Number of Distribution Feeders: 19
2	Substation No. 2 – Phnom Penh	EDC	Voltage: 115/22/15 kV Number and Size of Transformers: 1 x 30 MW Number of Outgoing Distribution Feeders: 13 Number of Incoming Distribution Feeders: 7 Total Number of Distribution Feeders: 20
3	Substation No. 3 – Phnom Penh	EDC	Voltage: 115/22 kV and 22/15 kV Number and Size of Transformers: 1 x 30 MW and 1 x 30 MW Number of Outgoing Distribution Feeders: 12 Number of Incoming Distribution Feeders: 4 Total Number of Distribution Feeders: 16
4	Substation – Kampong Speu	EDC	Voltage: 115/22 kV Number and Size of Transformers: 1 x 6.3 MW Number of Outgoing Distribution Feeders: 1 Number of Incoming Distribution Feeders: 1 Total Number of Distribution Feeders: 2

6.3.2 Energy Transmitted

Information about energy transmitted is shown in the Table below:

Table 28: Energy Transmitted

No.	Name of Licensee	Transmission Lines	Energy Transmitted, kWh	
			Year 2004	Year 2005
1	Electricité du Cambodge	Kirirom 1 – Kampong Speu – Phnom Penh	27,005,163	40,853,652

6.4 Electricity Distribution

6.4.1 Electricity Distribution Facilities

In general in the Kingdom of Cambodia, the consolidated licensees and distribution licensees, having the right to distribute electricity in their authorized areas, own the electricity distribution facilities in their area. At present, step down substation from high voltage to medium voltage, MV lines, transformer substation, LV lines and equipment for electricity supply to the customers are considered as distribution facilities.

Information on distribution facilities in the Kingdom of Cambodia for year 2005 shown in the Table below:

Table 29: Information on Electricity Distribution Facilities

Name	Unit	Number/Length of the lines	
		Year 2004	Year 2005
1 – <u>22 kV MV lines:</u>	Kilometer	<u>447.55</u>	<u>974.29</u>
- Underground cables	Kilometer	235.8	354.89
- Overhead Lines	Kilometer	211.75	619.40
2 – <u>15 kV MV lines:</u>	Kilometer	<u>38.39</u>	<u>45.61</u>
- Underground cables	Kilometer	8.61	20.51
- Overhead Lines	Kilometer	29.78	25.10
3 – <u>10 kV MV lines:</u>	Kilometer	-	<u>18.02</u>
- Underground cables	Kilometer	-	0.32
- Overhead Lines	Kilometer	-	17.70
4 – <u>6.6 kV MV lines:</u>	Kilometer	-	<u>41.02</u>
- Underground cables	Kilometer	-	0.40
- Overhead Lines	Kilometer	-	40.62
5 – <u>6.3 kV MV lines:</u>	Kilometer	14.86	<u>92.75</u>
- Underground cables	Kilometer	0.56	6.02
- Overhead Lines	Kilometer	14.3	86.73
6 – <u>LV lines:</u>	Kilometer	1,776.13	<u>2,064.24</u>
- Underground cables	Kilometer	193	156.13
- Overhead Lines	Kilometer	1,586.13	1,908.11
7 – <u>Transformer Substation:</u>	Number	376	376
- Transformer	Unit	600	1,120
- Capacity	MVA	492.36	748.95

6.4.2 Quantity of Electric Energy Sold and Number of Consumers

Information on energy generated and purchased, energy sold, percentage of losses and number of consumers for groupings based on broad characteristics of operation is given in the Table below:

Table 30: Information on energy generated and purchased, energy sold, proportion losses and number of consumers classified by area of supply

Area of Service	Energy Generated and Purchased, Million kWh	Energy Sold, Million kWh	Losses in %	Number of Consumers
Phnom Penh system	752.542	667.074	11.4	163,805
Areas getting supply from Vietnam	25.408	24.025	5.4	10,167
Areas getting supply from Thailand	56.838	51.395	9.6	12,953
Other Provincial Towns	127.371	105.537	17.1	71,262
Other areas and Rural areas	15.103	10.325	31.6	47,989
Total	977.262	858.356	12.2	306,176

Information on the quantity of generation, purchase, sold, loss and number of consumers of each licensee are shown in Annex 4, Annex 5 and Annex 6.

Annex 1
Province wise Area of supply served by Distribution and Consolidated Licensees for the Year 2005

Province/city	Location of Services	License Number	Name of Licensee	Situation of Supply per Day
1-Bantay Meanchey	Some area of Ochraov District	011L	Anco Brothers Co., Ltd	Supply 24 hour
	Phsar Osnguot Town, Khum O-Prasat, Monkulborey District	077L	Mrs Chao Nuy	From 17:00 to 23:00 and from 12:00 to 14:00
	Phsar Kutasat Town, Khum Nimit and kob, Ochrov District	078L	Mr.Vorn Yeang	From 17:00 to 23:00
	Phsar Phnomtoch Town, Khum Phnomtoch, Monkulborey District	079L	Mr.Thon Thoeung	From 11:00 to 15:00 and from 18:00 to 22:00
	Phsar Banteay Neang Town, Khum Banteay Neang, Monkulborey District	080L	Mr. Sok Vitith	From 11:00 to 22:00
	Phnomsrok District Town	081L	Mr. Muon Han	From 17:00 to 23:00
	Thmor Puok District Town	087L	Mr. Hang Sovathsothea	From 11:00 to 14:00 and from 16:00 to 24:00
	Phsar Phnom Thom Tbong Town, Khum O-Prasat, Mongkul Borei District	105L	Mr. Soeung Sovanna	From 05:00 to 07:00 and from 17:00 to 22:00
	Preahnet Preah District	108L	Mrs. Sin Savuon	From 11:00 to 14:00 and from 18:00 to 22:00
2-Battambang	Provincial Town of Battambang	001L	EDC	Supply 24 hour
	District Center of Komrieng, Phnom Proeuk and Sampeou Loun	008L	Franasie Import Export Co., Ltd	Supply 24 hour
	Thmor Kol Town, ThmorKol District	043L	Mr. Lay Se	Supply 24 hour
	Khum Phnom Sampao, Banan District	068L	Mrs. Tuoch Montha	From 04:30 to 07:00; from 11:00 to 14:00 and from 17:00 to 22:30
	Rattanakmondul District Town	069L	Mr. Nob Bin	From 04:00 to 06:30, from 11:00 to 13:30 and from 18:00 to 23:30

	Khum Prek Khpob and Khum Prek Luong, Ek Phnom District	091L	Mr. Sun Pov	From 9:00 to 16:00 and From 18:30 to 22:30
	District Town of Mongrussey (Left Hand Side of National Road No. 5, Direction from Phnom Penh to Battambang)	109L	Mrs. Tieng Chenda	Supply 24 hour
	District Town of Mongrussey (Right Hand Side of National Road No. 5, Direction from Phnom Penh to Battambang)	110L	Mrs. Sea Kech	Supply 24 hour
	Phum Ang Long Tamey, Khum Chheuteal, Banorn District	117L	Mr. Dung Ly	From 9:00to 16:00 and from 17:00 to 23:00
3-Kampong Cham	Provincial Town of Kampong Cham, Ponhea Krek District, Memut District	001L	EDC	Supply 24 hour
	Phsar Prey Toteung Town, Prey Chhor District	023L	Mr. Khun Sambo	Supply 24 hour
	Phsar Phaav Town, Khum Paav, Batheay District	026L	Mr. Chang Bunnaret	From 4:30 to 6:30 and From 18:00 to 23:00
	Phsar Suong Town, Khum Suong, Tbong Khmom District	027L	Mr. Kuy Sour	From 04:00 to 24:00
	Phum Thnal Bek, Khum Svayteab, Chamkaleu District	038L	Mr. Sieng Seng	Form 12:00 to 14:00 and From 18:00 to 22:00
	Phsar Skun Town, Khum Soteb, Chheung Prey District	047L	Mr. Mom Dara	From 03:30 to 23:30
	Phsar Boskhnor Town, Khum Boskhnor, Chamkaleu District	056L	Mr. Sieng Khun	From 04:30 to 07:00 and 11:00 to 23:00
	Phsar Steungtrang Town, Khum Prekok, Steung Trang District	057L	Mr. Chin Sohin	From 18:00 to 22:00
	Khum Mesorchrey, Steung Trang District	060L	Mrs. Sieng Sipo	From 11:00 to 17:00 and 18:00 to 22:00
	Phsar Mean Town, Khum Mean and Trapaingpreah, Preychor District	065L	Mr. Chuo Sroan	From 05:00 to 06:00 and from 18:00 to 23:00
Phsar Svayteab Town, Khum Svayteab, Chamkaleu District	074L	Mr. Mean Vanna	From 11:00 to 17:00 and 18:00 to 22:30	

Electricity Authority of Cambodia

	Phsar Speu Town, Khum Speu and Chayyo, Chamkaleu District	075L	Mr. Chhay Kimhuor	From 18:00 to 23:00
	Phsar Tnaloteung Town, Khum Chob, Tbongkhmom District	085L	Kampong Cham City Power Co., Ltd	From 17:30 to 23:00
	Oreang Ov District Town	088L	Mr. Khun Sophal	From 04:00 to 09:00, 10:00 to 15:00 and 17:00 to 24:00
	Stoeng Town, PonheaKrek District	122L	E.D.Con. Co., Ltd	Supply 24 hour
4-Kampong Chhnang	Phsar Ponley Town, Khum Ponley, Boribor District	040L	Mr. Mok Heat	From 04:30 to 6:30 and from 18:00 to 23:00
	Kampong Tralach District Town	041L	Mr. Ty Sokhun	From 04:00 to 24:00
	Provincial Town of Kampong Chhnang	051L	Sovanny Electricity Development Co.Ltd	Supply 24 hour
	Phsar Prey Khmer Town, Khum Andong Snay and Rolea Phear, Rolea Phear District	095L	Mrs. Chan Simoly	From 04:00 to 06:00 and 18:00 to 23:30
	Phsar Pong Ro Town, Khum Pong Ro and Svay Chrum, Rolea Phear	096L	Mr. Chea Sareth	From 11:00 to 14:00 and 18:00 to 22:00
	Teuk Phos District Town	119L	Mr. Un Sophal	From 07:30 to 11:30, 14:00 to 17:00 and 18:00 to 24:00
5-Kampong Speu	Khum Trapaing Kong, Somrong Tong District	053L	Mr. Long Nget	From 4:00 to 6:00 and from 11:00 to 0:00
	Phsar Tram Khnar Town, Khum Chung Rouk, Korng Pisey District	064L	Mr. Chhin Seng	Supply 24 hour
	Phsar Trapaing Kralleng Town, Khum Kirivoan, Phnom Sruoch District	067L	Mr. Sok Hoy	From 4:00 to 6:30, from 17:00 to 23:00
	Phsar O'dong Town, Khum Viangchas, O'dong District	076L	Mr. Quach Edward	Supply 24 hour
	Phsar Trengtrayeng Town, Khum Trengtraeng, Phnomsroch District	082L	Mr. Ly Sok Kry	From 04:00 to 24:30
	Khum Tuol Ampil, Borset District	084L	Mr. Mok Chen	Monday to Friday From 17:00 to 22:30 and on Saturday and Sunday from 15:00 to 22:30

Electricity Authority of Cambodia

	Phsar Battdeung Town, Udong District	099L	Mr. Leng Mov	From 11:00 to 24:00
	Phsar Thnalbort Town, Khum Por Ankrang, Bor Seth District	101L	Mrs. So Rinda	From 04:00 to 09:00 and 18:00 to 23:00
6-Kampong Thom	Kampong Thmar Town, Khum Balang, Baray District and Khum Kampong Thmar, Santuk District	006L	Mr. Huor Pheng	Supply 24 hour
	Provincial Town of Kampong Thom	012L	Chilbo Industrial (Cambodia) Co., Ltd	Supply 24 hour
	Khum Treal Town, Baray District	019L	Mr. Te Kok Eng	From 04:00 to 06:30 and 08:00 to 22:30
	Phsar Tang Kok Town, Khum Sovyong, Baray District	032L	Mr. Nget Kong	From 04:15 to 06:15, and from 18:00 to 23:00
	Phsar Baray Town, Khum Baray, Baray District	039L	Mr. Kim Chantara	From 4:00 to 23:00
	Stong District Town	063L	Mr. Ong Hoksine	From 4:30 to 07:00 and from 17:00 to 0:00
	Phsar Tangkrosang Town, Khum Tangkrosang, Santuk District	073L	Mr. Treung San	From 11:00 to 15:00 and from 18:00 to 23:00
7-Kampot	Kampong Trach District Town, Khum Oeuseysrok Khanglech and Khum Kampong Trach Khanglech and Khum Kanthor Khanglech	001L	EDC	Supply 24 hour
	Phum Trapeang Ropao, Khum Prekthnot, Kampot District	042L	Mrs. Muy Kuan	From 18:00 to 22:00
	Phsar Chhouk Town, Chhouk District	044L	Mr. Kong Puthy	Supply 24 hour
	Banteaymeas District Town	093L	Mr. Khut Chenda	Supply 24 hour
	Angkor Chey District Town	097L	Mr. Yin Ech	From 11:00 to 17:00 and 18:00 to 22:30
8-Kandal	Area around Phnom Penh	001L	EDC	Supply 24 hour
	Koh Thom and Saang District	011L	Anco Brothers Co., Ltd	Supply 24 hour
	Neakleung Town (West of Mekong River), Luek Dek District	021L	Mr. Nov Sokha	Supply 24 hour

Electricity Authority of Cambodia

	Phsar Rokakong Town, Mukkampung District	037L	Mr. Kry Bunthong	From 04:00 to 23:00
	Tambon Treuy Sla, Sa Ang District	049L	Mrs. Khiev Nareth	From 18:00 to 6:00
	Khum Prekthmey and Khum Chheu Teal, Kean Svay District	050L	Reeco Company	Supply 24 hour
	Phsar Thnal Toteung Town, Khum Damnak-Ampil, Ang Snoul District	053L	Mr. Long Nget	From 04:00 to 06:00 and from 11:00 to 24:00
	Phsar Kampongkontourt Town, Khum Bakou, Kandalsteung District	058L	Mr. Lor Ngoun	From 18:00 to 23:00
	Phsar Ang Snuol, Khum Peuk, Ang Snuol District	061L	Mr. Khoeun Sambath	From 11:00 to 14:00 and from 18:00 to 22:30
	Estern Phsar Prek Kdam Town, Khum Koh Chin, Ponhealeu District	062L	Mr. Keb Borey	From 17:00 to 22:30
	Phsar Prek Anhchang Town, Khum Prek Anhchanh, Mokampoul District	066L	Mr. Pean Sokhalay	Supply 24 hours
	Southern Phsar Saang Town, Khum Preakkoy, Saang District	071L	Mr. Heng Tray	Supply 24 hours
	Khum Vihearlung and Khum Kampongluong, Punnhea Leu District	076L	Mr. Quach Edward	Supply 24 hours
	Northern Phsar Saang Town, Sa Ang District	086L	Mr. Koeung Rithy	Supply 24 hours
	Ponhea Leu District	099L	Mr. Leng Mov	From 11:00 to 24:00
	Phum Kdeychas, Khum Bak Kheng, Mukompol District	103L	Mr. Nhem Phany	Supply 24 hours
	Phum N°3, N°4 and N° 5, Khum Svay Rolom, Saang District	104L	Mr. Suon Sany	From 04:30 to 07:30, 10:45 to 13:15 and 17:15 to 23:30
	Phum Areyksat, Khum Areyksat, Lavea-Em District	114L	Ms. Chea Ting	From 18:00 to 22:00
9-Koh Kong	Koh Kong Provincial Town	014L	Duty Free Shop Co., Ltd	Supply 24 hours
	Sre Ambil District Town	028L	Mr. Samrith Sothy	Supply 24 hours

Electricity Authority of Cambodia

	Phum Koh Sdech, Khum Koh Sdech, Kirisakor District	106L	Mrs. Ann Samlan	Supply 24 hours
10-Kratie	Provincial Town of Kratie and part of Snoul District	059L	Electricity of Kratie Province	Supply 24 hours
11-Krong Kep	-	-	-	-
12-Mondulkiri	-	-	-	-
13-Oddor Meanchey	Osmach Town, Khum Osmarch, Samrong District	014L	Duty Free Shop Co., Ltd	Supply 24 hours
	Phsar Sam Rong and Phsar Chouk Town, Khum Samrong, Samrong District	092L	Mr. Som Visal	Supply 24 hours
14-Pailin City	Area along Road No. 10 from Phum Phsar Prom, Sangkat Stung Kach, Salakrao to Sangkat Tuol Lavear, Khan Pailin	009L	MSP Development co., Ltd	Supply 24 hours
	Pailin City	089L	Vannak Pheap Development Co., Ltd	Supply 24 hours
15-Phnom Penh	Phnom Penh	001L	EDC	Supply 24 hours
	Phum Bakeng and Phum Ktor, SangKat Prek Leap, Khan Rusey Keo	090L	Mr. Ven Veasna	From 00:00 to 06:00 and from 10:00 to 24:00
	Phum Bak Kheng, Sang Kat Prek Leap, Khan Rusey Keo	103L	Mr. Nhem Phany	Supply 24 hours
16-Preah Vihear	Provincial Town of Preah Vihear	031L	Mr. Chan Thun	Supply 24 hours
17-Prey Veng	Prey Veng including Kampong Leave District	001L	EDC	Supply 24 hours
	Neak Loeng Town (East of Mekong River), Peamro District	017L	Mrs. Bun Liv	Supply 24 hours
	Phsar Snay Pul Town, Khum Roka, Pearang District	018L	Mr. Ky Sophea	From 00:00 to 06:00 and from 11:30 to 14:00 and from 17:00 to 24:00
	Kar-Andoek Town, Khum Prasat, Kampong Trabek District	036L	Mrs. Pauch Kim	From 00:00 to 07:00 and from 08:00 to 11:00 and from 16:00 to 24:00

Electricity Authority of Cambodia

	Phsar Kampong Popel Town, Khum Kampong Popel, Peareang District	045L	Mr. Keo Dara	From 05:00 to 06:00 and from 17:30 to 24:30
	Phsar Svay Antor Town, Khum Svay Antor, Prey Veng District	046L	Mr. Seng Sokun	Monday to Friday from 4:00 to 6:00 and from 17:30 to 23:00 and Saturday and Sunday from 4:00 to 6:00 and from 15:00 to 23:00
18-Pursat	Phsar Beungknar Town, Khum Beungknar, Bakan District	033L	Mr. Chhuor Nguon	From 7:00 to 15:00 and from 18:00 to 22:00
	Khum Trapeang Chhohng, Bakan District	034L	Mr. Toem Touch	From 06:30 to 17:00 and from 18:00 to 22:00
	Provincial Town of Pursat and parts of Kandeang District	052L	Nareth Co. Ltd Electricity Development	Supply 24 hours
	Phsar Svaydounkeo Town, Khum Svaydounkeo, Bakan District	072L	Mr. Ya Sambath	From 16:00 to 22:00
	Khum O-Tapong, Bakan District	102L	Mr. Preab Vannareth	From 18:00 to 22:00
19-Ratanakiri	Provincial Town OF Ratanakiri	001L	EDC	Supply 24 hours
20-Siem Reap	Provincial Town of Siem Reap	001L	EDC	Supply 24 hours
	Puork District Town	035L	Mrs. Chhuoy Poeut	From 4:00 to 24:00
	Phsar Domdek Town, Sonikom District	048L	Mr. Chhom Sophay	From 6:00 to 10:00 , 12:00 to 16:30 and 18:00 to 22:00
	Phsar Tnalchek Town, Khum Keang sangke and Damdeak, Sotnikum District	083L	Mr. Tun Yoeun	From 4:00 to 5:00, from 11:00 to 16:00 and from 18:00 to 22:00
	Chikreng District Town	111L	Mr. Kong Vun	Supply 24 hours
	Chikreng District Town	112L	Mr. Ly Kang	Supply 24 hours
21-Sihanouk ville	Sihanoukville	001L	EDC	Supply 24 hours
	Phsar Veal Reinh Town, Khan Preynob	029L	Mr. Sok Thy	Supply 24 hours
	Sangkat Tomnobrolok and Kompenh, Khun Stoeng Hav	030L	Mr. Ly Bunthy	Supply 24 hours
	Phsar Smachdeng, SangKat Ream, Khan Preynop	098L	Mrs. Kun Sivanny	From 17:30 to 23:00

Electricity Authority of Cambodia

	Sangkat Otresh, Khan Steung Hav	120L	Mr. Chan Keat	From 11:00 to 15:00 and from 17:00 to 07:00
22-Steung Treng	-			
23- Svay Rieng	Bavit District	001L	EDC	Supply 24 hours
24-Takeo	Takeo	001L	EDC	Supply 24 hours
	Phsar Tonlab Town, Khum Preahbath chanchum, Kirivong District	013L	Mr. Mak Thorn	Supply 24 hours
	Phsar Samrong Yong Town, Khum Trapaing Sab, Baty District	015L	Mr. Srey Sokhom	Monday to Friday from 17:00 to 23:00 and Saturday and Sunday from 11:00 to 23:00
	Phsar Kampong Chrey Town Located in Districts of Trang and Koh Andet	016L	Mr. Ke Kuyhuoy	From 18:00 to 22:30
	Phsar Preylvea Town, Khum Preylvea, Prey Kabas District	020L	Mr. Chhou Lay	From 7:00 to 23:00
	Phum Thmor Sor, Khum Korkpor, Boreychuolsa District	022L	Mr. Kong Phat	From 17:30 to 23:30
	Phsar Sayva Town, Preykabas District	054L	Mrs. Ouch Por	From 11:00 to 14:00 and from 17:00 to 23:00
	Phsar Preysandek Town, Khum Preyslek, Trang District	055L	Mr. Park Hean	From 18:00 to 22:00
	Khum Sophy, Baty District	064L	Mr. Chhin Seng	Supply 24 hours
	Phsar Pangsey Town, Khum Kvao, Samrong District	084L	Mr. Mok Chen	Monday to Friday from 17:00 to 22:30 and Saturday and Sunday from 15:00 to 22:30
	Khum Beungtranh, Samrong District	101L	Mrs. So Rinda	From 04:00 to 09:00 and 18:00 to 23:00
	District Town of Angkor Borey	113L	Mr. Nou Krui	From 11:00 to 14:00 and from 18:00 to 23:00
Baty District Town	118L	Mrs. Sok Kheng	From 7:30 to 15:00 and from 17:30 to 22:30	

	Phsar Tramkork, Khum Tramkork, Tramkork District	121L	Mrs. Kaing Gech Seam	From 17:00 to 23:00
--	---	------	----------------------	---------------------

Remarks:

In the year 2005, the following licenses were transferred to new service providers:

Kampong Cham Province

1. License No. 038L from Mr. Khut Bunpech to Mr. Sieng Seng
2. License No. 057L from Mrs. Heng Phearun to Mr. Chin Sohin
3. License No. 060L from Mr. Lim Sokhonn to Mrs. Sieng Sipo
4. License No. 085L from Mr. Soem Sokha to Kampong Cham City Power Co., Ltd

Pursat Province

5. License No. 052L from Nareth Electricity Development Co., Ltd to Nareth Co., Ltd Electricity Development.

Annex 2(a)
Summary Information about Energy Sent out and Installed Capacity

No.	Type of Service Providers	Number of Licensees		Installed Capacity, kW		Proportion of Installed Capacity in % for 2005	Energy Sent Out, Million kWh		Proportion of energy sent out in % for 2005
		End of Year 2004	End of Year 2005	End of Year 2004	End of Year 2005		Year 2004	Year 2005	
1	Independent Power Producers	8	11	88,392	127,970	55.3	450.854	625.131	71.1
2	Consolidated Licensees	87	98	17,532	19,505	8.4	19.078	20.793	2.4
3	Electricité du Cambodge	1	1	83,900	83,860	36.3	273.298	233.450	26.5
Total		96	110	189,824	231,335	100	743.231	879.374	100

Annex 2(b)
Summary Information about the Generation Facilities and Energy Sent out classified by Generation Type

No.	Type of Generation	Installed Capacity, kW		Proportion of Installed Capacity in % for 2005	Energy Sent Out, Million kWh		Proportion of Energy Sent Out in % for 2005
		End of Year 2004	End of Year 2005		Year 2004	Year 2005	
1	Hydropower	13,000	12,960	5.60	28.422	43.542	4.95
2	Steam (Burn HFO)	18,000	18,000	7.78	65.973	28.385	3.23
3	Diesel/HFO	158,824	200,273	86.57	648.836	807.325	91.81
4	Wood, other bio mass		102	0.04		0.122	0.01
Total		189,824	231,335	100	743.231	879.374	100

Annex 2(c)
Summary Information about the Generation Facilities and Energy Sent out classified by Generation Size

No.	Capacity of Generating Plant	Installed Capacity, kW		Proportion of Installed Capacity in % for 2005	Energy Sent Out, Million kWh		Proportion of energy sent out in % for 2005
		End of Year 2004	End of Year 2005		Year 2004	Year 2005	
1	From 10 to 100 kW	4,075	4,281	1.85	5.215	4.461	0.51
2	From 101 to 500 kW	6,112	7,749	3.35	7.297	9.153	1.04
3	From 501 to 1000 kW	6,487	5,827	2.52	11.503	9.787	1.11
4	From 1001 to 3000 kW	6,600	9,400	4.06	6.439	10.648	1.21
5	Over 3000 kW	166,550	204,078	88.22	712.777	845.325	96.13
Total		189,824	231,335	100	743.231	879.374	100

Annex 3
Information on Generation Licensees

License No.	Name of Licensee	Location of the Generation Plant	Installed Capacity, kW		Energy Sent Out, kWh	
			End of Year 2004	End of Year 2005	Year 2004	Year 2005
002L	Cambodia Utilities Pte. Limited	C 2 Power Plant, Phnom Penh	37,100	37,100	243,648,075	246,466,275
003L	Jupiter Power (Cambodia) Co., Ltd	EDC's C1 Power Plant, Sangkat Tuol Sangké, Russey Keo District, (Phnom Penh)	24,950	24,950	143,236,354	106,727,760
		Kampong Chhnang's Power Plant, Phum 1, Sangkat Ksan, Kasmpong Chhnang District, (Kampong Chhnang)	750	-	2,621,500	1,852,800
		Pursat's Power Plant, Phum Pea Nheak 2, Sangkat Pteah Prey, Sampov Meas District, (Pursat)	-	-	1,292,220	-

Electricity Authority of Cambodia

004L	Global Technological Support SDN BHD	Kampong Cham Power Plant, Village #7, Sangkat Kampong Cham, (Provincial Town of Kampong Cham)	3,280	3,280	7,867,188	8,991,200
005L	Mr. Chea Sopha	Siem Reap's Power Plant, National Road No. 6, Phum Krouns, Khum Dang Khum, Srok Siem Reap, (Siem Reap)	-	-	2,567,242	-
		Battambang's Power Plant, Road No. 1, Phum Kamakor, Khum Svay Por, Srok Battambang, (Battambang)	-	-	12,498,180	-
007L	CETIC International Hydropower Development Co., Ltd	Kirirom Plateau of Koh kong Province, (Koh Kong and Kampong Speu)	12,000	12,000	27,005,163	40,853,652
024L	Global Power System Pte. Ltd	Phum No3, Khum Kampong Learv, Kampong Learv Distrect, (Prey Veng)	984	984	1,833,280	1,985,200
025L	Santepheap Cambodia Investment Co., Ltd	Phum 2, Khum Rokaranong, Daun keo District, (Provincial Town of Takeo)	-	-	1,463,920	-
094L	Edward Energy Supply Co., Ltd	Pursat's Power Plant in Road No. 1, Phum Pea Nheak 1, Khum Pteah Prey, Sampov Meas Distict, (Pursat)	1,880	1,880	1,873,540	3,196,000
		Kampong Chnnang's Power Plant, Phum 1, Sangkat Ksan, Kasmping Chhnang District, (Kampong Chhnang)	-	2,800	-	829,000
100L	J.P.N Cambodia International Co., Ltd	Takeo's Power Plant in Phum 2, Khum Rokaknong, Daun Keo, (Provincial Town of Takeo)	1,128	1,128	861,130	2,705,170
107L	Union Victory Asia Co., Ltd	Battambang's Power Plant in Road N° 1, Phum Kamma- kor, Khum Svay Po, Battambang District, (Battambang)	6,320	6,320	4,086,590	18,947,200

115L	Khmer Electrical Power Co., Ltd	Phum Dam Nak Thom, Sangkat Steung Mean Chey (Phnom Penh)	-	32,128	-	171,935,650
116L	City Power Group Corporation	Phum Tror Peang Chrey, Sangkat Kar Kap, Khan Dang Kor (Phnom Penh)	-	5,400	-	20,641,378
Total			88,392	127,970	450,854,382	625,131,285

Remarks:

The data in the table above

-for Jupiter Power (Cambodia) Co. at Kampong Chhanang is up to August 2005

-for Edward Energy Supply co., Ltd at Kampong Chhanang from September to December 2005

-for Khmer Electrical Power Co., Ltd from March to December 2005, and

-for City Power Group Corporation from May to December 2005.

Annex 4
Summery Information on Distribution Licensees for year 2005

License No.	Name of Licensee	Area of Supply	Number of consumers	Energy purchased kWh	Energy Sold kWh	Loss in %
008L	Franasie Import Export Co., Ltd	District Center of Komrieng (Battambang)	288	3,105,732	2,795,159	10
		District Center of Phnom Proek (Battambang)	240	770,808	693,727	10
		District Center of Sampeu Loun (Battambang)	756	1,160,508	1,044,457	10
009L	MSP Development Co., Ltd	Phsar Prom Town (Krong Pailin)	350	3,461,520	3,115,368	10
011L	Anco Brothers Co., Ltd	Ochraov District (Banteay Meanchey)	5,998	29,072,880	26,406,182	9
		Koh Thom and Saang District (Kandal)	1,200	497,400	447,660	10
014L	Duty Free Shop Co., Ltd	Koh Kong Provincial Town	3,134	12,624,000	11,361,600	10
		Osmach Town (Oddor Meanchey)	784	5,216,420	4,694,778	10
050L	Reeco Company	Khum Prekthmey and Chheu Teal, Kean Svay District (Kandal)	1,200	514,760	452,988	12

051L	Sovanny Electricity Development Co., Ltd	Provincial Town of Kampong Chhnang (Kampong Chhnang)	3,512	2,681,800	2,226,907	17
052L	Nareth Electricity Development Co., Ltd	Provincial Town of Pursat (Pursat) and Kandeang District	4,786	3,196,000	2,467,030	23
089L	Vannak Pheap Development Co., Ltd	Pailin City	1,403	1,426,360	1,283,724	10
122L	Electricity Development and Construction Co., Ltd	Stoeng Town, PonheaKrek District (Kampong Cham)	900	759,103	683,193	10

Remarks:

- In 2005, MSP Development Co., Ltd imported total energy of 4,887,880 kWh from Thailand. It sold 1,426,360 kWh to Vannak Peap Development Co., Ltd and used 3,461,520 kWh for own supply to consumers.
- The number of consumers for Sovanny Electricity Development Co., Ltd and Nareth Electricity Development Co., Ltd has decreased from the report of 2004 due to the figures provided by both companies in the year 2004 was incorreccted.
- The data in the table above for Anco Brothers CO., Ltd in Kandal province is from July to December 2005 and for Electricity Dev. And Const. Co., Ltd is for December 2005 only.

Annex 5**Summery Information on Electricité du Cambodge, License No. 001L for year 2005**

Area of Supply	Installed Capacity as on 31 st Dec 2005 kW	Energy purchased kWh	Energy Generated kWh	Auxiliary Use, kWh	Total Energy Sent Out kWh	Number of consumers	Energy Sold kWh	Loss in %
Phnom Penh	65,000	592,308,235	168,017,029	7,783,280	752,541,984	162,605	667,135,904	11
Sihanoukville	7,400	3,061,670	23,925,420	1,302,489	25,684,601	8,195	22,528,087	12
Provincial Town of Siem Reap	10,500	2,095,100	51,924,960	4,019,670	50,000,390	12,180	42,996,702	14
Provincial Town of Kampong Cham	-	8,991,200	-	-	8,991,200	5,358	7,259,349	19
Provincial Town of Takeo	-	2,705,170	-	-	2,705,170	2,609	2,396,366	11
Provincial Town of	-	18,947,200	-	594,200	18,353,000	16,271	15,019,096	18

Battambang								
Provincial Town of Kampot	-	4,450,990	-	-	4,450,990	4,820	2,963,670	33
Provincial Town of Prey Veng	-	1,985,200	-	-	1,985,200	2,786	1,246,662	37
Provincial Town of Ratanakiri	960	944,380	2,688,266	-	3,632,646	2,569	2,194,074	40
Khum Bavit	-	8,619,000	-	-	8,619,000	1,678	8,315,518	4
Memot District	-	6,527,100	-	-	6,527,100	2,774	6,163,093	6
Ponhea Krek District	-	7,733,000	-	-	7,733,000	1,427	7,353,428	5
Kampong Trach	-	1,044,500	-	-	1,044,500	1,788	932,838	11

Annex 6
Information on Consolidated Licensees for year 2005

License No.	Name of Licensee	Area of Supply	Number of consumers	Installed Capacity on 31 st Dec 2005, kW	Energy generated, kWh	Energy Sold, kWh	Loss in %
006L	Mr. Huor Pheng	Khum Balang, Baray District and Khum Kampong Thmar, Santuk District (Kampong Thom)	1,542	480	522,828	393,682	25
012L	Chilbo Industrial (Cambodia) Co., Ltd	Provincial Town of Kampong Thom (Kampong Thom)	3,375	1,520	2,056,680	1,645,344	20
013L	Mr. Mak Thorn	Phsar Tonlab Town, Kirivong District (Takeo)	977	598	426,600	290,620	32
015L	Mr. Srey Sokhom	Phsar Samrong Yong Town, Khum Trapeang Sab, Baty District, (Takeo)	541	120	63,800	48,214	24
016L	Mr. Ke Kuyhuoy	Phsar Kampong Chrey Town, Trang District (Takeo)	142	80	19,176	13,080	32
017L	Mrs. Bun Liv	Estern Neakleung, Peamro District (Prey Veng)	2,200	2,072	1,861,200	1,119,034	40

Electricity Authority of Cambodia

018L	Mr. Ky Sophea	Phsar Snay Pol, Khum Roka, Pearang District (Prey Veng)	798	276	129,942	83,388	36
019L	Mr. Te Kok Eng	Khum Treal Town, Baray District (Kampong Thom)	450	220	156,099	93,087	40
020L	Mr. Chhour Lay	Phsar Preylvear Town, Khum Preylvea, Prey Kabas District, (Takeo)	230	85.6	59,917	44,177	26
021L	Mr. Nov Sokha	Western Neakleung Town, Luek Dek District (Kandal)	810	448	602,600	405,140	33
022L	Mr. Kong Phat	Phum Thmor Sor, Khum Korkpor, Boreychuolsa District (Takeo)	75	52.5	9,944	8,940	10
023L	Mr. Khun Sambo	Phsar Prey Toteung Town, Prey Chhor district (Kampong Cham)	685	371.2	292,972	188,034	36
026L	Mr. Chang Bunnaret	Phsar Phaav Town, Khum Paav, Batheay District (Kampong Cham)	456	124	106,200	76,463	28
027L	Mr. Kuy Sour	Phsar Suong Town, Tbong Khmom District (Kampong Cham)	1,299	592	798,504	566,938	29
028L	Mr. Samrith Sothy	Sre Ambil District Town (Koh Kong)	1,320	720	647,760	401,611	38
029L	Mr. Sok Thy	Phsar Veal Rinh Town, Preynob district (Sihanoukville)	1,300	688	617,541	430,599	30
030L	Mr. Ly Bunthy	Sangkat Tomnobrolok and Kompenh, Steung Hav District (Sihanoukville)	800	376	388,800	240,000	38
031L	Mr. Chan Thon	Provincial Town of Preah Vihear (Preah Vihear)	550	460	704,800	520,789	26
032L	Mr. Nhen Kong	Phsar Tang Kok Town, Baray District (Kampong Thom)	484	190	130,267	75,221	42
033L	Mr. Chhuor Nguon	Phsar Beungknar Town, Khum Beungknar, Bakan District (Pursat)	309	72	105,000	73,700	30
034L	Mr. Toem Touch	Khum Trapeang Chhohng, Bakan District (Pursat)	228	92	83,100	46,493	44
035L	Mrs. Chhuoy Poeut	Puork District Town (Siem Reap)	720	294.4	290,512	203,677	30

Electricity Authority of Cambodia

036L	Mrs. Pauch Kim	Kar-Andoek Town, Khum Prasat, Kampong Trabek District (Prey Veng)	629	172	222,471	200,633	10
037L	Mr. Kry Bunthong	Phar Rokakong Town, Mukkampung District (Kandal)	1,100	148	227,300	125,810	45
038L	Mr. Khut Bunpich	Phum Thnal Bek, Khum Svayteab, Chamkaleu District (Kampong Cham)	500	236	67,005	50,254	25
039L	Mr. Kim Chantara	Phsar Baray Town, Khum Baray, Baray District (Kampong Thom)	350	116	132,600	79,179	40
040L	Mrs. Mok Heat	Phsar Ponley Town, Khum Ponley, Boribor District (Kampong Chnang)	273	94	77,523	51,560	33
041L	Mr. Ty Sokhun	Kampong Tralach District Twon (Kampong Chnnang)	650	509	183,195	135,708	26
042L	Mrs. Muy Kuan	Phum Trapeang Ropao, Khum Prekthnot, Kampot District (Kampot)	215	192	54,947	23,760	57
043L	Mr. Lay Se	Thmor Kol Town, ThmorKol District (Battambang)	690	352	228,238	175,568	23
044L	Mr. Kong Puthy	Phsar Chhouk Town, Chhouk District (Kampot)	700	256	140,000	112,000	20
045L	Mr. Keo Dara	Phsar Kampong Popel Town, Peareang district (Prey Veng)	280	68	35,352	24,746	30
046L	Mr. Seng Sokun	Phsar Svay Antor Town, Prey Veng District (Prey Veng)	310	110	89,852	62,896	30
047L	Mr. Mom Dara	Phsar Skun Town, Khum Soteb, Chheung Prey district (Kampong Cham)	570	280	205,800	151,800	26
048L	Mr. Chhom Sophay	Phsar Domdek Town, Khum Domdek, Sonikom District, (Siem Reap)	570	160	160,106	116,290	27
049L	Mrs. Khiev Nareth	Tambon Treuy Sla, Sa Ang District (Kandal)	882	332	109,382	89,865	18
053L	Mr. Long Nget	Phsar Thnal Toteung Town (Kandal) and Khum Trapaing Krong (Kampong Speu)	478	92	225,498	156,108	31

Electricity Authority of Cambodia

054L	Mrs. Ouch Por	Phsar Sayva Town, Prey Kabas District (Takeo)	240	72	36,520	26,883	26
055L	Mr. Park Hean	Phsar Preysandek Town, Khum Preyslek, Trang District (Takeo)	86	28	14,160	8,834	38
056L	Mr. Sieng Khun	Phsar Bokhnor Town, Khum Boskhnor, Chamkaleur District (Kampong Cham)	530	92	196,760	117,932	40
057L	Mrs. Heng Phearun	Phsar Steungtrang Town, Khum Prekak, Steung Trang District (Kampong Cham)	210	40	38,460	25,692	33
058L	Mr. Lor Ngoun	Phsar Kampongkontourt Town, Kandalsteung District (Kandal)	190	40	43,800	31,536	28
059L	Electricity of Kratie Province	Provincial Town of Kratie	2,843	160	2,486,578	1,737,248	30
		Part of Snuol District (Kratie)	400		986,600	887,940	10
060L	Mr. Lim Sokhonn	Khum Mesorchrey, Steung Trang District (Kampong Cham)	430	72	101,784	69,949	31
061L	Mr. Khoeun Sambath	Phsar Ang Snuol Town, Khum Peuk, Ang Snuol District (Kandal)	265	76	49,098	38,660	21
062L	Mr. Keb Borey	Estern Phsar Prek Kdam Town, Ponhealeu District (Kanda)	230	96	31,073	20,848	33
063L	Mr. Ong Hoksin	Stong District Town (Kampong Thom)	788	300	217,535	163,000	25
064L	Mr. Chhin Seng	Phsar Tram Khnar Town (Kampong Speu), and Khum Sophy (Takeo)	480	80	123,840	76,781	38
065L	Mr. Chuo Sroan	Phsar Mean Town, Khum Mean and Trapaingpreah, Preychor District (Kampong Cham)	143	76	24,560	19,200	22
066L	Mr. Pean Sokhalay	Phsar Prek Anhchang Town, Mokampoul District (Kandal)	680	90	75,023	50,835	32
067L	Mr. Sok Hoy	Phsar Trapaing Kraleung Town, Phnom Sruoch District (Kampong Speu)	306	60	58,714	41,100	30

Electricity Authority of Cambodia

068L	Mrs. Tuoch Montha	Khum Phnom Sampao, Banan District (Battambang)	420	90	113,700	35,199	69
069L	Mr. Nob Ben	Rattanakmondul District Town (Battambang)	442	96	91,858	54,643	41
071L	Mr. Heng Tray	Southern Phsar Saang Town, Khum Preakkoy, Saang District (Kandal)	1025	160	252,180	174,492	31
072L	Mr. Ya Sambath	Phsar Svaydounkeo Town, Bakan District (Pursat)	140	88	31,562	21,462	32
073L	Mr. Treung San	Phsar TangKrorSang Town, Santuk District (Kampong Thom)	450	64	77,550	57,840	25
074L	Mr. Mean Vanna	Phsar Svayteap Town, Khum Svayteap, Chamkaleu District (Kampong Cham)	300	84	109,840	80,677	27
075L	Mr. Chhay Kimhuor	Phsar Speu Town, Khum Speu and Chayyo, Chamkaleu District (Kampong Cham)	555	80	103,824	64,080	38
076L	Mr. Quach Edward	Phsar Otdong Town, Khum Viangchas, Otdong District (Kampong Speu) and Khum Vihearlung, Punnhea Leu (Kandal)	2,035	776	586,927	464,920	21
077L	Mrs. Chao Nuy	Phsar Osnguot Town, Monkulborey District (Bantaymeanchey)	252	76	72,639	37,843	48
078L	Mr. Vorn Yeang	Phsar Kutasat Town, Khum Nimit and Kob, Ochrov District (Bantaymeanchey)	173	40	35,811	23,635	34
079L	Mr. Thon Theung	Phsar Phnomtouch Town, Monkulborey District (Bantaymeanchey)	400	89.6	66,800	48,140	28
080L	Mr. Sok Vitith	Phsar Banteayneang Town, Monkulborey District (Bantaymeanchey)	228	56	49,109	25,491	48
081L	Mr. Moun Han	Phnomsrok District Town (Bantaymeanchey)	400	89.6	56,432	34,021	40
082L	Mr. Ly Sokry	Phsar Trengtra Yeung Town, Phnomsroch District (Kampong Speu)	567	170	146,160	106,080	27

Electricity Authority of Cambodia

083L	Mr. Toung Yeun	Phsar Tnalchek Town, Khum Keangsangke and Damdeak, Sotnikum District (Siem Reap)	200	28	32,400	22,700	30
084L	Mr. Mok Chen	Phsar Pangsey Town, Samrong District (Takeo) and Khum Tuol Ampil, Borset District (Kampong Speu)	163	24	21,623	17,523	19
085L	Mr. Soem Sokha	Phsar Tnaltoteung Town, Khum Chob, Tbongkhmom District (Kampong Cham)	130	72	65,123	42,330	35
086L	Mr. Koeung Rithy	Northern Phsar Saang Khangcheung Town, Sa Ang District, (Kandal)	1,150	320	352,600	242,708	31
087L	Mr. Hang Sovathsothea	Thmor Puok District Town, (Banteay Meanhay)	490	74.4	62,131	50,948	18
088L	Mr. Khun Sopal	Oreang Ov District Town, (Kampong Cham)	850	90.4	164,767	115,337	30
090L	Mr. Ven Veasna	Phum Bakeng and Phum Ktor, Sang Kat Prek Leap, Khan Rusey Keo, (Phnom Penh)	600	240	182,881	164,881	10
091L	Mr. Sun Pov	Khum Prek Khpob and Khum Prek Luong, Ek Phnom District, (Battambang)	450	80	94,250	72,000	24
092L	Mr. Som Visal	Phsar Chouk and Sam Rong, Khum Samrong, Samrong District, (Oddormeanchay)	700	92	277,923	223,398	20
093L	Mr. Khut Chenda	Banteaymeas District Town, (Kampot)	980	88	62,978	47,863	24
095L	Mrs. Chan Simoly	Phsar Prey Khmer Town, Khum Andong Snay and Rolea Phear, Rolea Phear District, (Kampong Chhnang)	280	68	40,498	33,749	17
096L	Mr. Chear Sareth	Phsar Pong Ro Town, Khum Pong Ro and Svay Chrum, Rolea Phear District, (Kampong Chhnang)	228	52	47,341	37,447	21
097L	Mr. Yin Ech	Angkor Chey District Town, (Kampot)	310	75	110,700	81,523	26

Electricity Authority of Cambodia

098L	Mrs. Kun Sivanny	Phsar Smachdeng, Sang Kat Ream Khan Preynop, (Sihanoukville)	360	68	65,013	47,460	27
099L	Mr. Leng Mov	Phsar Battdeung Town, Udong District (Kampong Speu) and Ponhea Leu District, (Kandal)	300	100	62,578	45,682	27
101L	Mrs. So Rinda	Phsar Thnalbort Town, Khum Por Ankrang, Bor Seth District, (Kampong Speu) and Khum Beungtranh, Samrong District, (Takeo)	300	60	70,800	42,480	40
102L	Mr. Preab Vannareth	Khum O-Tapong, Bakan District, (Pursat)	121	56	26,842	18,789	30
103L	Mr. Nhem Phany	Phum Bak Kheng, Sang Kat Prek Leap, Khan Rusey Keo, Phnom Penh and Phun Kdeychas, Khum Rusey Keo, Mukompol District, (Kandal)	808	80	258,797	170,295	34
104L	Mr. Suon Sany	Phum N°3, N°4 and N° 5, Khum Svay Rolom, Saang District, (Kandal)	450	76	148,500	120,720	19
105L	Mr. Soeung Sovanna	Phsar Phnom Thom Tbong Town, Khum O-Prasat, Mongkul Borei District, (Banteay Meanchay)	240	56	42,245	30,254	28
106L	Mrs. Ann Samlan	Phum Koh Sdech, Khum Koh Sdech, Kirisakor District, (Koh Kong)	600	96	51,428	36,000	30
108L	Mrs. Sin Savuon	Preahnet Preah District (Banteay Meanchey Province)	361	165	79,337	47,890	40
109L	Mrs. Tieng Chenda	District Town of Mongrussey (Left Hand Side of National Road No. 5, Direction from Phnom Penh to Battambang) (Battambang Province)	752	300	299,254	180,250	40
110L	Mrs. Sea Kech	District Town of Mongrussey (Right Hand Side of National Road No. 5, Direction from Phnom Penh to Battambang) (Battambang Province)	585	220	110,500	98,500	11

Electricity Authority of Cambodia

111L	Mr. Kong Vun	Chikreng District Town (Siem Reap Province)	650	96	179,481	138,062	23
112L	Mr. Ly Kang	Chikreng District Town (Siem Reap Province)	150	88	42,875	30,013	30
113L	Mr. Nou Kruey	District Town of Angkor Borey (Takeo Province)	270	60	19,640	13,729	30
114L	Ms. Chea Ting	Phum Areyksat, Khum Areyksat, Lavea-Em District (Kandal Province)	200	64	31,200	15,600	50
117L	Mr. Dung Ly	Phum Ang Long Tamey, Khum Chheuteal, Banorn District (Battambang Province)	86	12	8,404	7,252	14
118L	Mrs. Sok Kheng	Baty District Town (Takeo Province)	285	50	50,870	41,135	19
119L	Mr. Un Sophal	Teuk Phos District Town (Kampong Chhnang Province)	340	92	21,181	17,221	19
120L	Mr. Chan Keat	Sangkat Otresh, Khan Steung Hav (Sihanoukville)	230	84	92,492	60,120	35
121L	Mrs. Kaing Gech Seam	Phsar Tramkork, Khum Tramkork, Tramkork District (Takeo)	250	88	90,600	67,800	25

Remarks:

The electricity supplied at Snoul district (Kratie) by Electricity of Kratie Province is imported from Vietnam. The quantity imported is shown under energy generated column in the above Table.

Annex 7
Tariffs at other Electricity Supply Areas of Licensees at end of year 2005

Area of Supply	Licensees	Tariff per kWh per month
Khum Balang, Baray District and Khum Kampong Thmar, Santuk District (Kampong Thom)	Mr. Huor Pheng	2000 Riels for consumption \geq 25 kWh
		1900 Riels for consumption less than 25 kWh
District Center of Komrieng (Battambang)	Franasie Import & Export Co., Ltd	4.5 Bahts for Big and MV Consumers
		5 Bahts for Hotels/Casino
		6 Bahts for all Consumers
District Center of Phnom Proek (Battambang)		7 Bahts
District Center of Sampeu Loun (Battambang)		7 Bahts
Phum Phsar Prom, Sangkat Stung Kach, Salakrao, (Pailin City)	MSP Development Co., LTD	6 Bahts for Vannak Peap Development Co., Ltd
		8 Bahts for all consumers
Ochraov District (Banteay Meanchey)	Anco Brothers Co., Ltd	4.3 Bahts for Big Consumers
		5 Bahts for medium consumers
		6 Bahts for small Consumers
Koh Thom and Saang District (Kandal)		650 Riels for small and Medium Consumers
		0.115 \$ for Big Consumers and Enterprises
Provincial Town of Kampong Thom (Kampong Thom)	Chilbo Industrial (Cambodia) Co., Ltd	1200 Riels
Phsar Tonlab Town, Khum Preahbathchanchum, Kirivong District, (Takeo)	Mr. Mak Thorn	2000 Riels
Koh Kong Provincial Town	Duty Free Shop Co., Ltd	400 Riels for company produces tire wheel vehicle
		500 Riels for Government Institutions
		600 Riels for all Consumers
Osmach Town, Khum Osmarch, Samrong District, (Oddor Meanchey)		300 Riels for own company
		400 Riels for Government Institutions
		500 Riels for all Consumers
Phsar Samrong Yong Town, Khum Trapeang Sab, Baty District, (Takeo)	Mr. Srey Sokhom	2500 Riels

Electricity Authority of Cambodia

Phsar Kampong Chrey Town Located in Districts of Trang and Koh Andet, (Takeo)	Mr. Ke Kuyhuoy	2000 Riels for consumption \geq 21 kWh
		2300 Riels for consumption from 11 to 20 kWh
		2500 Riels for consumption less than 10 kWh
Estern Neakleung, Peamro District (Prey Veng)	Mrs. Bun Liv	2200 Riels
Phsar Snay Pol, Khum Roka, Pearang District (Prey Veng)	Mr. Ky Sophea	2200 Riels
Khum Treal Town, Baray District (Kampong Thom)	Mr. Te Kok Eng	2500 Riels
Phsar Preylvear Town, Khum Preylvea, Prey Kabas District, (Takeo)	Mr. Chhour Lay	2000 Riels for consumption \geq 50 kWh
		2200 Riels for consumption from 30 to 50 kWh
		2400 Riels for consumption less than 30 kWh
Western Neakleung Town, Luek Dek District (Kandal)	Mr. Nov Sokha	2300 Riels
Phum Thmor Sor, Khum Korkpor, Boreychuolsa District (Takeo)	Mr. Kong Phat	2800 Riels
Phsar Prey Toteung Town, Prey Chhor district (Kampong Cham)	Mr. Khun Sambo	0.50 \$ for consumption \geq 100 kWh
		0.55 \$ for consumption from 50 to 100 kWh
		0.60 \$ for consumption less than 50 kWh
Phsar Phaav Town, Khum Paav, Batheay District (Kampong Cham)	Mr. Chang Bunnaret	1700 Riels for consumption \geq 50 kWh
		1900 Riels for consumption from 10 to 49 kWh
		2000 Riels for consumption less than 10 kWh
Phsar Suong Town, khum Suong, Tbong Khmom District (Kampong Cham)	Mr. Kuy Sour	1900 Riels for consumption \geq 86 kWh
		2200 Riels for consumption less than 86 kWh
Sre Ambil District Town (Koh Kong)	Mr. Samrith Sothy	2300 Riels for consumption \geq 25 kWh
		2400 Riels for consumption less than 25 kWh
Phsar Veal Rinh Town, Preynob district (Sihanoukville)	Mr. Sok Thy	1700 Riels
Sangkat Tomnobrolok and Kompenh, Steung Hav District (Sihanoukville)	Mr. Ly Bunthy	2200 Riels
Provincial Town of Preah Vihear (Preah Vihear)	Mr. Chan Thon	1900 Riels
Phsar Tang Kok Town, Baray District (Kampong Thom)	Mr. Nhen Kong	2300 Riels
Phsar Beungknar Town, Khum Beungknar, Bakan District (Pursat)	Mr. Chhuor Nguon	2500 Riels
Khum Trapeang Chhohng, Bakan District (Pursat)	Mr. Toem Touch	2500 Riels
Puork District Town (Siem Reap)	Mrs. Chhuoy Poeut	2500 Riels

Electricity Authority of Cambodia

Kar-Andoek Town, Khum Prasat, Kampong Trabek District (Prey Veng)	Mrs. Pauch Kim	1600 Riels
Phar Rokakong Town, Mukkampung District (Kandal)	Mr. Kry Bunthong	2500 Riels
Phum Thnal Bek, Khum Svayteab, Chamkaleu District (Kampong Cham)	Mr. Khut Bunpich	0.70 \$
Phsar Baray Town, Khum Baray, Baray District (Kampong Thom)	Mr. Kim Chantara	2400 Riels
Phsar Ponley Town, Khum Ponley, Boribor District (Kampong Chhnang)	Mrs. Mok Heat	2200 Riels
Kampong Tralach District Twon (Kampong Chhnang)	Mr. Ty Sokhun	2200 Riels
Phum Trapeang Ropao, Khum Prekthnot, Kampot District (Kampot)	Mrs. Muy Kuan	2500 Riels for consumption \geq 25 kWh
		3000 Riels for consumption lower than 25 kWh
Thmor Kol Town, ThmorKol District (Battambang)	Mr. Lay Se	2500 Riels
Phsar Chhouk Town, Chhouk District (Kampot)	Mr. Kong Puthy	2300 Riels
Phsar Kampong Popel Town, Peareang district (Prey Veng)	Mr. Keo Dara	2500 Riels
Phsar Svay Antor Town, Khum Svay Antor, Prey Veng District, (Prey Veng)	Mr. Seng Sokun	2500 Riels
Phsar Skun Town, Khum Soteb, Chheung Prey district (Kampong Cham)	Mr. Mom Dara	2000 Riels for consumption \geq 50 kWh
		2200 Riels for consumption lower than 50 kWh
Phsar Domdek Town, Khum Domdek, Sonikom District, (Siem Reap)	Mr. Chhom Sophay	2200 Riels for consumption \geq 40 kWh
		2600 Riels for consumption lower than 40 kWh
Tambon Treuy Sla, Sa Ang District (Kandal)	Mrs. Khiev Nareth	2000 Riels
Khum Prekthmey and Chheu Teal, Kean Svay District (Kandal)	Reeco Company	650 Riels
Provincial Town of Kampong Chhnang (Kampong Chhnang)	Sovanny Electricity Development Co.,Ltd	0.277 \$
Provincial Town of Pursat (Pursat)	Nareth Electricity Development Co.,Ltd	0.277 \$
Phsar Thnal Toteung Town, Khum Damnak-Ampil, Ang Snoul District, (Kandal) and Khum Trapaing Kong, Somrong Tong District, (Kampong Speu)	Mr. Long Nget	2000 Riels
Phsar Sayva Town, Prey Kabas District (Takeo)	Mrs. Ouch Por	2500 Riels

Electricity Authority of Cambodia

Phsar Preysandek Town, Khum Preyslek, Trang District (Takeo)	Mr. Park Hean	2000 Riels for Consumption \geq 10 kWh
		2500 Riels for consumption from 4 to 10 kWh
		3000 Riels for consumption less than 4 kWh
Phsar Bokhnor Town, Khum Boskhnor, Chamkaleur District (Kampong Cham)	Mr. Sieng Khun	2800 Riels
Phsar Steungtrang Town, Khum Prekak, Steung Trang District (Kampong Cham)	Mrs. Heng Phearun	2800 Riels for consumption \geq 5 kWh
		3300 Riels for consumption less than 5 kWh
Phsar Kampongkontourt Town, Kandalsteung District (Kandal)	Mr. Lor Ngoun	2100 Riels for consumption \geq 5 kWh
		2300 Riels for consumption less than 5 kWh
Provincial Town of Kratie	Electricity of Kratie Province	1500 Riels
Khum Mesorchrey, Steung Trang District (Kampong Cham)	Mr. Lim Sokhonn	2800 Riels for Consumption \geq 5 kWh
		3200 Riels for consumption less than 5 kWh
Phsar Ang Snuol Town, Khum Peuk, Ang Snuol District (Kandal)	Mr. Khoeun Sambath	2100 Riels
Estern Phsar Prek Kdam Town, Ponhealeu District (Kanda)	Mr. Keb Borey	2700 Riels
Stong District Town (Kampong Thom)	Mr. Ong Hoksin	2000 Riels
Phsar Tram Khnar Town, Khum Chung Rouk, Korng Pisey District, (Kampong Speu) and Khum Sophy, Baty District, (Takeo)	Mr. Chhin Seng	2300 Riels for Consumption \geq 25 kWh
		2500 Riels for consumption less than 25 kWh
Phsar Mean Town, Khum Mean and Trapaingpreah, Preychor District (Kampong Cham)	Mr. Chuo Sroan	2500 Riels for consumption \geq 10 kWh
		2700 Riels for consumption less than 10 kWh
Phsar Prek Anhchang Town, Khum Prek Anhchanh, Mokampoul District, (Kandal)	Mr. Pean Sokhalay	2000 Riels
Phsar Trapaing Krালেung Town, Khum Kirivoan, Phnom Sruoch District, (Kampong Speu)	Mr. Sok Hoy	2800 Riels
Khum Phnom Sampao, Banan District (Battambang)	Mrs. Tuoch Montha	2500 Riels for consumption \geq 3 kWh
		3000 Riels for consumption 2 kWh
		3500 Riels for consumption 1 kWh
Rattanakmondul District Town (Battambang)	Mr. Nob Ben	3000 Riels
Southern Phsar Saang Town, Khum Preakkoy, Saang District	Mr. Heng Tray	2300 Riels for consumption \geq 25 kWh

Electricity Authority of Cambodia

(Kandal)		2500 Riels for consumption less than 25 kWh
Phsar Svaydounkeo Town, Bakan District (Pursat)	Mr. Ya Sambath	3000 Riels
Phsar Tangkrosang Town, Khum Tangkrosang, Santuk District (Kampong Thom)	Mr. Treung San	2000 Riels
Phsar Svayteap Town, Khum Svayteap, Chamkaleu District (Kampong Cham)	Mr. Mean Vanna	2800 Riels
Phsar Speu Town, Khum Speu and Chayyo, Chamkaleu District (Kampong Cham)	Mr. Chhay Kimhuor	2800 Riels for consumption \geq 5 kWh
		3200 Riels for consumption from 3 to 4 kWh
		4000 Riels for consumption less than 3 kWh
Phsar Otdong Town, Khum Viangchas, Otdong District (Kampong Speu) and Khum Vihearlung, Punnhea Leu (Kandal)	Mr. Quach Edward	1700 Riels for consumption \geq 300 kWh
		1800 Riels for consumption less than 300 kWh
Phsar Osngot Town, Khum O-Prasat, Monkulborey District, (Bantay Meanchey)	Mrs. Chao Nuy	2500 Riels for consumption \geq 100 kWh
		3000 Riels for consumption less than 100 kWh
Phsar Kutasat Town, Khum Nimit and Kob, Ochrov District (Bantaymeanchey)	Mr. Vorn Yeang	3500 Riels
Phsar Phnomtoch Town, Khum Phnomtoch, Monkulborey District, (Bantay Meanchey)	Mr. Thon Theung	3000 Riels for consumption \geq 20 kWh
		3500 Riels for consumption less than 20 kWh
Phsar Bantay Neang Town, Khum Bantay Neang, Monkulborey District, (Bantay Meanchey)	Mr. Sok Vitith	3000 Riels
		8000 Riels/Lamp/month
Phnomsrok District Town (Bantaymeanchey)	Mr. Moun Han	2500 Riels
Phsar Trengtrayeng Town, Khum Trengtraeng, Phnomsroch District, (Kampong Speu)	Mr. Ly Sokry	1800 Riels for consumption \geq 50 kWh
		2000 Riels for consumption from 20 to 50 kWh
		2200 Riels for consumption less than 20 kWh
Phsar Tnalchek Town, Khum Keangsangke and Damdeak, Sotnikum District (Siem Reap)	Mr. Toung Yoeun	2200 Riels for consumption \geq 40 kWh
		2600 Riels for consumption less than 40 kWh
Phsar Pangsey Town, Samrong District (Takeo) and Khum Tuol Ampil, Borset District (Kampong Speu)	Mr. Mok Chen	2500 Riels
Phsar Tnaltoteung Town, Khum Chob, Tbongkhmom District (Kampong Cham)	Mr. Sem Sokha	2500 Riels

Northern Phsar Saang Khangcheung Town, Sa Ang District, (Kandal)	Mr. Koeung Rithy	1700 Riels
Thmor Puok District Town, (Banteay Meanhay)	Mr. Hang Sovathsothea	2500 Riels for consumption \geq 10 kWh 2800 Riels for consumption less than 10 kWh
Oreang Ov District Town, (Kampong Cham)	Mr. Khun Sophal	1700 Riels for consumption \geq 50 kWh 2000 Riels for consumption from 11 to 49 kWh 2300 Riels for consumption less than 11 kWh
Pailin City	Vannak Peap Company Co., Ltd	850 Riels
Phum Bakeng and Phum Ktor, Sang Kat Prek Leap, Khan Rusey Keo, Phnom Penh	Mr. Ven Veasna	1800 Riels for consumption \geq 100 kWh 1900 Riels for consumption from 51 to 99 kWh 2000 Riels for consumption less than 51 kWh
Khum Prek Khpob and Khum Prek Luong, Ek Phnom District, (Battambang)	Mr. Sun Pov	2500 Riels for consumption \geq 25 kWh 2800 Riels for consumption less than 25 kWh
Phsar Chouk and Sam Rong, Khum Samrong, Samrong District, (Oddormeanchay)	Mr. Som Visal	1700 Riels for consumption \geq 300 kWh 1800 Riels for consumption from 100 to 300 kWh 2000 Riels for consumption from 10 to 99 kWh 2300 Riels for consumption from 5 to 9 kWh 2500 Riels for consumption less than 4 kWh
Banteaymeas District Town, (Kampot)	Mr. Khut Chenda	2000 Riels
Phsar Prey Khmer Town, Khum Andong Snay and Rolea Phear, Rolea Phear District, (Kampong Chhnang)	Mrs. Chan Simoly	2900 Riels
Phsar Pong Ro Town, Khum Pong Ro and Svay Chrum, Rolea Phear District, (Kampong Chhnang)	Mr. Chear Sareth	2900 Riels
Angkor Chey District Town, (Kampot)	Mr. Yin Ech	2000 Riels for consumption \geq 50 kWh 2300 Riels for consumption less than 50 kWh
Phsar Smachdeng, Sang Kat Ream Khan Preynop, (Sihanoukville)	Mrs. Kun Sivanny	2000 Riels
Phsar Battdeung Town, Udong District (Kampong Speu) and Ponhea Leu District, (Kandal)	Mr. Leng Mov	2200 Riels
Phsar Thnalbort Town, Khum Por Ankrang, Bor Seth District,	Mrs. Chhin Seng	2300 Riels for consumption \geq 6 kWh

(Kampong Speu) and Khum Beungtranh, Samrong District, (Takeo)		2500 Riels for consumption less than 6 kWh
Khum O-Tapong, Bakan District, (Pursat)	Mr. Preab Vannareth	3000 Riels
Phum Bak Kheng, Sang Kat Prek Leap, Khan Rusey Keo, Phnom Penh and Phun Kdeychas, Khum Rusey Keo, Mukompol District, (Kandal)	Mr. Nhem Phany	2000 Riels
Phum N°3, N°4 and N° 5, Khum Svay Rolom, Saang District, (Kandal)	Mr. Suon Sany	1500 Riels for consumption \geq 51 kWh
		2000 Riels for consumption less than 51 kWh
Phsar Phnom Thom Tbong Town, Khum O-Prasat, Mongkul Borei District, (Banteay Meanchay)	Mr. Soeung Sovanna	3000 Riels for consumption \geq 21 kWh
		3500 Riels for consumption less than 21 kWh
Phum Koh Sdech, Khum Koh Sdech, Kirisakor District, (Koh Kong)	Mrs. Ann Samlan	2300 Riels
Preahnet Preah District (Banteay Meanchey Province)	Mrs. Sin Savuon	2600 Riels for consumption \geq 51 kWh
		2800 Riels for consumption from 31 to 50 kWh
		2900 Riels for consumption from 11 to 30 kWh
		3000 Riels for consumption less than 11 kWh
District Town of Mongrussey (Left Hand Side of National Road No. 5, Direction from Phnom Penh to Battambang) (Battambang Province)	Mrs. Tieng Chenda	2000 Riels
District Town of Mongrussey (Right Hand Side of National Road No. 5, Direction from Phnom Penh to Battambang) (Battambang Province)	Mrs. Sea Kech	2500 Riels
Chikreng District Town (Siem Reap Province)	Mr. Kong Vun	2300 Riels for consumption \geq 25 kWh
		2600 Riels for consumption less than 25 kWh
Chikreng District Town (Siem Reap Province)	Mr. Ly Kang	2300 Riels for consumption \geq 25 kWh
		2600 Riels for consumption less than 25 kWh
District Town of Angkor Borey (Takeo Province)	Mr. Nou Krui	2500 Riels
Phum Areyksat, Khum Areyksat, Lavea-Em District (Kandal Province)	Ms. Chea Ting	2000 Riels for consumption \geq 10 kWh
		2500 Riels for consumption less than 10 kWh
Phum Ang Long Tamey, Khum Chheuteal, Banorn District	Mr. Dung Ly	1200 Riels

Electricity Authority of Cambodia

(Battambang Province)		
Baty District Town (Takeo Province)	Mrs. Sok Kheng	1500 Riels for consumption \geq 20 kWh
		2000 Riels for consumption from 10 to 19 kWh
		2100 Riels for consumption less than 10 kWh
Teuk Phos District Town (Kampong Chhnang Province)	Mr. Un Sophal	2700 Riels
Sangkat Otresh, Khan Steung Hav (Sihanoukville)	Mr. Chan Keat	1900 Riels
Phsar Tramkork, Khum Tramkork, Tramkork District (Takeo)	Mrs. Kaing Gech Seam	2500 Riels
Stoeng Town, PonheaKrek District (Kampong Cham)	E.D.Con. Co., Ltd	-